

IF IT WORX, IT'S



USER MANUAL

COLOUR PRINTER 

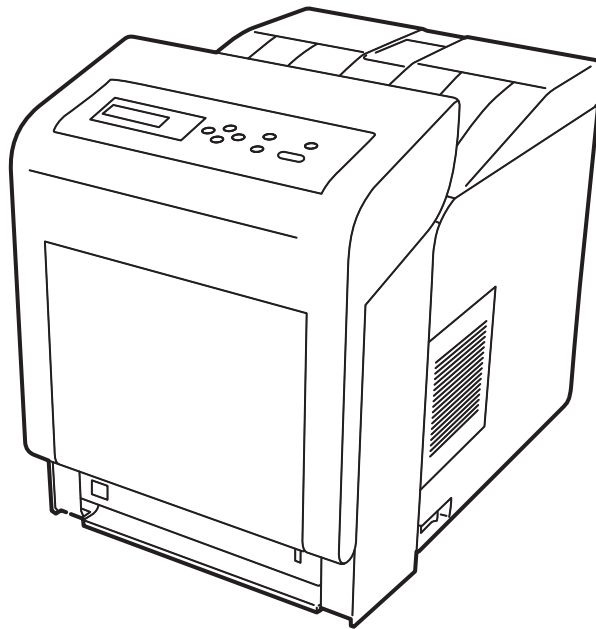
P-C3060DN

Print
A4



P-C3060DN

Operation Guide



Contents

| | | |
|----------|--|------|
| 1 | Machine Parts | |
| | Components at the Front of the Printer | 1-2 |
| | Components at the Left of the Printer | 1-2 |
| | Internal Components | 1-3 |
| | Components at the Rear of the Printer | 1-3 |
| | Operation Panel | 1-4 |
| 2 | Printing Operation | |
| | Changing Network Interface Parameters | 2-2 |
| | Printing a Network Interface Status Page | 2-4 |
| | Embedded Web Server RX | 2-5 |
| | Installing the Printer Driver | 2-14 |
| | Printing from Application Software | 2-21 |
| | Printing by AirPrint | 2-22 |
| | Status Monitor | 2-23 |
| | Energy Saver Function | 2-27 |
| 3 | Maintenance | |
| | General Information | 3-2 |
| | Toner Container Replacement | 3-2 |
| | Replacing the Waste Toner Box | 3-6 |
| | Cleaning the Printer | 3-8 |
| 4 | Troubleshooting | |
| | General Guidelines | 4-2 |
| | Print Quality Problems | 4-3 |
| | Error Messages | 4-6 |
| | Clearing Paper Jams | 4-11 |
| 5 | Specifications | |

Legal and Safety Information



CAUTION NO LIABILITY IS ASSUMED FOR ANY DAMAGE CAUSED BY IMPROPER INSTALLATION.

Notice on Software

SOFTWARE USED WITH THIS PRINTER MUST SUPPORT THE PRINTER'S EMULATION MODE. The printer is factory-set to emulate the PCL.

Notice

The information in this guide is subject to change without notification. Additional pages may be inserted in future editions. The user is asked to excuse any technical inaccuracies or typographical errors in the present edition.

No responsibility is assumed if accidents occur while the user is following the instructions in this guide. No responsibility is assumed for defects in the printer's firmware (contents of its read-only memory).

This guide, any copyrightable subject matter sold or provided with or in connection with the sale of the page printer, are protected by copyright. All rights are reserved. Copying or other reproduction of all or part of this guide, any copyrightable subject matter without the prior written consent of Copyright owner is prohibited. Any copies made of all or part of this guide, any copyrightable subject must contain the same copyright notice as the material from which the copying is done.

Regarding Tradenames

- PRESCRIBE and KPDL are trademarks of Kyocera Corporation.
- Microsoft, Windows, Windows XP, Windows Server 2003, Windows Vista, Windows Server 2008, Windows 7, Windows Server 2012, Windows 8 and Internet Explorer are registered trademarks or trademarks of Microsoft Corporation in the U.S.A. and/or other countries.
- PCL is a trademark of Hewlett-Packard Company.
- Adobe Acrobat, Adobe Reader and PostScript are trademarks of Adobe Systems, Incorporated.
- Ethernet is a registered trademark of Xerox Corporation.
- NetWare is a registered trademark of Novell, Inc.
- IBM is a registered trademark of International Business Machines Corporation.
- AppleTalk, Bonjour, Macintosh, and Mac OS are trademarks of Apple Inc., registered in the U.S. and other countries.
- All European language fonts installed in this machine are used under licensing agreement with Monotype Imaging Inc.
- Helvetica, Palatino and Times are registered trademarks of Linotype GmbH.
- ITC Avant Garde Gothic, ITC Bookman, ITC ZapfChancery and ITC ZapfDingbats are registered trademarks of International Typeface Corporation.

-
- UFST™ MicroType® fonts by Monotype Imaging Inc. are installed in this machine.
 - AirPrint and the AirPrint logo are trademarks of Apple Inc.
 - iOS is a trademark or registered trademark of Cisco in the U.S. and other countries and is used under license by Apple Inc.
 - ThinPrint is a trademark of Cortado AG in Germany and other countries.

All other brands and product names are registered trademarks or trademarks of their respective companies. The designations ™ and ® will not be used in this Operation Guide.

License Agreements

Typeface Trademark Acknowledgement

All resident fonts in this printer are licensed from Monotype Imaging Inc.

Helvetica, Palatino and Times are registered trademarks of Linotype-Hell AG. ITC Avant Garde Gothic, ITC Bookman, ITC ZapfChancery and ITC Zapf Dingbats are registered trademarks of International Typeface Corporation.

Monotype Imaging License Agreement

- 1 “Software” shall mean the digitally encoded, machine readable, scalable outline data as encoded in a special format as well as the UFST Software.
- 2 You agree to accept a non-exclusive license to use the Software to reproduce and display weights, styles and versions of letters, numerals, characters and symbols (“Typefaces”) solely for your own customary business or personal purposes at the address stated on the registration card you return to Monotype Imaging. Under the terms of this License Agreement, you have the right to use the Fonts on up to three printers. If you need to have access to the fonts on more than three printers, you need to acquire a multi-user license agreement which can be obtained from Monotype Imaging. Monotype Imaging retains all rights, title and interest to the Software and Typefaces and no rights are granted to you other than a License to use the Software on the terms expressly set forth in this Agreement.
- 3 To protect proprietary rights of Monotype Imaging, you agree to maintain the Software and other proprietary information concerning the Typefaces in strict confidence and to establish reasonable procedures regulating access to and use of the Software and Typefaces.
- 4 You agree not to duplicate or copy the Software or Typefaces, except that you may make one backup copy. You agree that any such copy shall contain the same proprietary notices as those appearing on the original.
- 5 This License shall continue until the last use of the Software and Typefaces, unless sooner terminated. This License may be terminated by Monotype Imaging if you fail to comply with the terms of this License and such failure is not remedied within thirty (30) days after notice from Monotype Imaging. When this License expires or is terminated, you shall either return to Monotype Imaging or destroy all copies of the Software and Typefaces and documentation as requested.

-
- 6 You agree that you will not modify, alter, disassemble, decrypt, reverse engineer or decompile the Software.
 - 7 Monotype Imaging warrants that for ninety (90) days after delivery, the Software will perform in accordance with Monotype Imaging-published specifications, and the diskette will be free from defects in material and workmanship. Monotype Imaging does not warrant that the Software is free from all bugs, errors and omissions.
 - 8 THE PARTIES AGREE THAT ALL OTHER WARRANTIES, EXPRESSED OR IMPLIED, INCLUDING WARRANTIES OF FITNESS FOR A PARTICULAR PURPOSE AND MERCHANTABILITY, ARE EXCLUDED.
 - 9 Your exclusive remedy and the sole liability of Monotype Imaging in connection with the Software and Typefaces is repair or replacement of defective parts, upon their return to Monotype Imaging.
 - 10 IN NO EVENT WILL MONOTYPE IMAGING BE LIABLE FOR LOST PROFITS, LOST DATA, OR ANY OTHER INCIDENTAL OR CONSEQUENTIAL DAMAGES, OR ANY DAMAGES CAUSED BY ABUSE OR MISAPPLICATION OF THE SOFTWARE AND TYPEFACES.
 - 11 Massachusetts U.S.A. law governs this Agreement.
 - 12 You shall not sublicense, sell, lease, or otherwise transfer the Software and/or Typefaces without the prior written consent of Monotype Imaging.
 - 13 Use, duplication or disclosure by the Government is subject to restrictions as set forth in the Rights in Technical Data and Computer Software clause at FAR 252-227-7013, subdivision (b)(3)(ii) or subparagraph (c)(1)(ii), as appropriate. Further use, duplication or disclosure is subject to restrictions applicable to restricted rights software as set forth in FAR 52.227-19 (c)(2).
 - 14 YOU ACKNOWLEDGE THAT YOU HAVE READ THIS AGREEMENT, UNDERSTAND IT, AND AGREE TO BE BOUND BY ITS TERMS AND CONDITIONS. NEITHER PARTY SHALL BE BOUND BY ANY STATEMENT OR REPRESENTATION NOT CONTAINED IN THIS AGREEMENT. NO CHANGE IN THIS AGREEMENT IS EFFECTIVE UNLESS WRITTEN AND SIGNED BY PROPERLY AUTHORIZED REPRESENTATIVES OF EACH PARTY. BY OPENING THIS DISKETTE PACKAGE, YOU AGREE TO ACCEPT THE TERMS AND CONDITIONS OF THIS AGREEMENT.

GPL/LGPL

This product contains GPL (<http://www.gnu.org/licenses/gpl.html>) and/or LGPL (<http://www.gnu.org/licenses/lgpl.html>) software as part of its firmware. You can get the source code, and you are permitted to copy, redistribute and modify it under the terms of GPL/LGPL.

Open SSL License

Copyright © 1998-2006 The OpenSSL Project. All rights reserved.

Redistribution and use in source and binary forms, with or without modification, are permitted provided that the following conditions are met:

- 1 Redistributions of source code must retain the above copyright notice, this list of conditions and the following disclaimer.
- 2 Redistributions in binary form must reproduce the above copyright notice, this list of conditions and the following disclaimer in the documentation and/or other materials provided with the distribution.

-
- 3 All advertising materials mentioning features or use of this software must display the following acknowledgment:
"This product includes software developed by the OpenSSL Project for use in the OpenSSL Toolkit. (<http://www.openssl.org/>)"
 - 4 The names "OpenSSL Toolkit" and "OpenSSL Project" must not be used to endorse or promote products derived from this software without prior written permission.
For written permission, please contact openssl-core@openssl.org.
 - 5 Products derived from this software may not be called "OpenSSL" nor may "OpenSSL" appear in their names without prior written permission of the OpenSSL Project.
 - 6 Redistributions of any form whatsoever must retain the following acknowledgment: "This product includes software developed by the OpenSSL Project for use in the OpenSSL Toolkit (<http://www.openssl.org/>)"

THIS SOFTWARE IS PROVIDED BY THE OpenSSL PROJECT "AS IS" AND ANY EXPRESSED OR IMPLIED WARRANTIES, INCLUDING, BUT NOT LIMITED TO, THE IMPLIED WARRANTIES OF MERCHANTABILITY AND FITNESS FOR A PARTICULAR PURPOSE ARE DISCLAIMED. IN NO EVENT SHALL THE OpenSSL PROJECT OR ITS CONTRIBUTORS BE LIABLE FOR ANY DIRECT, INDIRECT, INCIDENTAL, SPECIAL, EXEMPLARY, OR CONSEQUENTIAL DAMAGES (INCLUDING, BUT NOT LIMITED TO, PROCUREMENT OF SUBSTITUTE GOODS OR SERVICES; LOSS OF USE, DATA, OR PROFITS; OR BUSINESS INTERRUPTION) HOWEVER CAUSED AND ON ANY THEORY OF LIABILITY, WHETHER IN CONTRACT, STRICT LIABILITY, OR TORT (INCLUDING NEGLIGENCE OR OTHERWISE) ARISING IN ANY WAY OUT OF THE USE OF THIS SOFTWARE, EVEN IF ADVISED OF THE POSSIBILITY OF SUCH DAMAGE.

Original SSLeay License

Copyright © 1995-1998 Eric Young (eay@cryptsoft.com) All rights reserved.

This package is an SSL implementation written by Eric Young (eay@cryptsoft.com). The implementation was written so as to conform with Netscapes SSL.

This library is free for commercial and non-commercial use as long as the following conditions are adhered to. The following conditions apply to all code found in this distribution, be it the RC4, RSA, lhash, DES, etc., code; not just the SSL code. The SSL documentation included with this distribution is covered by the same copyright terms except that the holder is Tim Hudson (tjh@cryptsoft.com).

Copyright remains Eric Young's, and as such any Copyright notices in the code are not to be removed.

If this package is used in a product, Eric Young should be given attribution as the author of the parts of the library used.

This can be in the form of a textual message at program startup or in documentation (online or textual) provided with the package.

Redistribution and use in source and binary forms, with or without modification, are permitted provided that the following conditions are met:

- 1 Redistributions of source code must retain the copyright notice, this list of conditions and the following disclaimer.

-
- 2 Redistributions in binary form must reproduce the above copyright notice, this list of conditions and the following disclaimer in the documentation and/or other materials provided with the distribution.
 - 3 All advertising materials mentioning features or use of this software must display the following acknowledgement:
"This product includes cryptographic software written by Eric Young (eay@cryptsoft.com)"
The word 'cryptographic' can be left out if the routines from the library being used are not cryptographic related :-).
 - 4 If you include any Windows specific code (or a derivative thereof) from the apps directory (application code) you must include an acknowledgement:
"This product includes software written by Tim Hudson (tjh@cryptsoft.com)"

THIS SOFTWARE IS PROVIDED BY ERIC YOUNG "AS IS" AND ANY EXPRESS OR IMPLIED WARRANTIES, INCLUDING, BUT NOT LIMITED TO, THE IMPLIED WARRANTIES OF MERCHANTABILITY AND FITNESS FOR A PARTICULAR PURPOSE ARE DISCLAIMED. IN NO EVENT SHALL THE AUTHOR OR CONTRIBUTORS BE LIABLE FOR ANY DIRECT, INDIRECT, INCIDENTAL, SPECIAL, EXEMPLARY, OR CONSEQUENTIAL DAMAGES (INCLUDING, BUT NOT LIMITED TO, PROCUREMENT OF SUBSTITUTE GOODS OR SERVICES; LOSS OF USE, DATA, OR PROFITS; OR BUSINESS INTERRUPTION) HOWEVER CAUSED AND ON ANY THEORY OF LIABILITY, WHETHER IN CONTRACT, STRICT LIABILITY, OR TORT (INCLUDING NEGLIGENCE OR OTHERWISE) ARISING IN ANY WAY OUT OF THE USE OF THIS SOFTWARE, EVEN IF ADVISED OF THE POSSIBILITY OF SUCH DAMAGE.

The licence and distribution terms for any publically available version or derivative of this code cannot be changed. i.e. this code cannot simply be copied and put under another distribution licence [including the GNU Public Licence.]

Compliance and Conformity

This equipment has been tested and found to comply with the limits for a Class B digital device, pursuant to Part 15 of the FCC Rules. These limits are designed to provide reasonable protection against harmful interference in a residential installation. This equipment generates, uses and can radiate radio frequency energy and, if not installed and used in accordance with the instructions, may cause harmful interference to radio communications. However, there is no guarantee that interference will not occur in a particular installation. If this equipment does cause harmful interference to radio or television reception, which can be determined by turning the equipment off and on, the user is encouraged to try to correct the interference by one or more of the following measures:

- Reorient or relocate the receiving antenna.
- Increase the separation between the equipment and receiver.
- Connect the equipment into an outlet on a circuit different from that to which the receiver is connected.
- Consult the dealer or an experienced radio/TV technician for help.
- The use of a non-shielded interface cable with the referenced device is prohibited.

CAUTION — The changes or modifications not expressly approved by the party responsible for compliance could void the user's authority to operate the equipment.

This device complies with Part 15 of FCC Rules and RSS-Gen of IC Rules.

Operation is subject to the following two conditions; (1) this device may not cause interference, and (2) this device must accept any interference, including interference that may cause undesired operation of the device.

* The above warning is valid only in the United States of America.

Interface connectors

IMPORTANT Be sure to power off the printer before connecting or disconnecting an interface cable. For protection against static electricity discharge to the printer's internal electronics through the interface connector(s), cover any interface connector that is not in use with the protective cap supplied.



Note Use shielded interface cables.

Safety Information

Laser Safety

This printer is certified as a Class 1 laser product under the U.S. Department of Health and Human Services (DHHS) Radiation Performance Standard according to Radiation Control for Health and Safety Act of 1968. This means that the printer does not produce hazardous laser radiation. Since radiation emitted inside the printer is completely confined within protective housings and external covers, the laser beam cannot escape from the printer during any phase of user operation.

Laser Notice

This printer is certified in the U.S. to conform to the requirements of DHHS 21 CFR Subchapter for Class I (1) laser products, and elsewhere is certified as a Class I laser product conforming to the requirements of IEC/EN 60825-1:2007.



DANGER CLASS 3B INVISIBLE LASER RADIATION
WHEN OPEN. AVOID DIRECT EXPOSURE TO BEAM.



CAUTION Use of controls or adjustments or performance
of procedures other than those specified herein may result
in hazardous radiation exposure.

Radio Frequency Transmitter

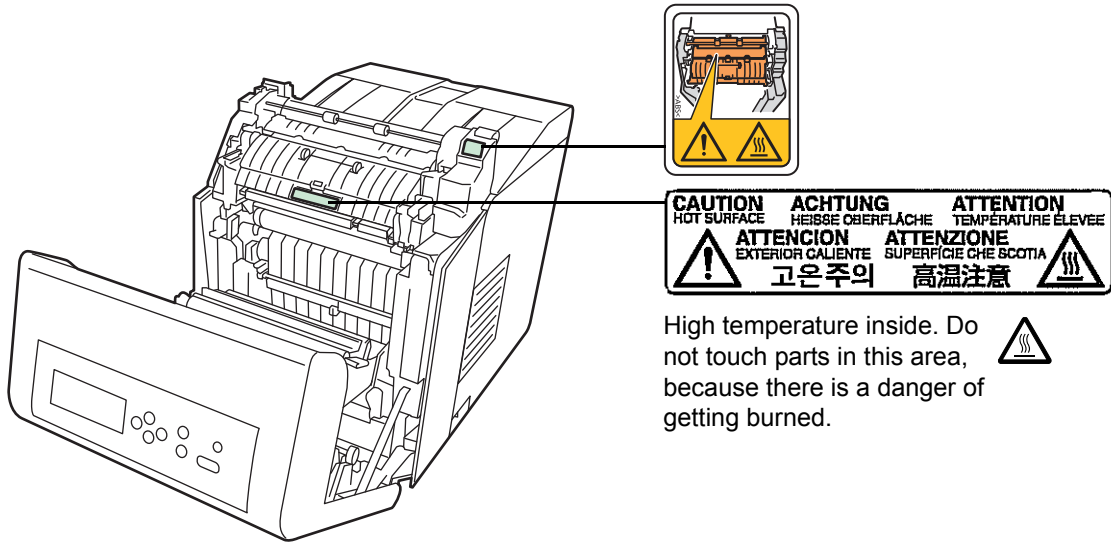
This machine contains a transmitter module. We, the manufacturer hereby declare that this equipment (page printer), model P-C3060DN is in compliance with the essential requirements and other relevant provisions of Directive 1999/5/EC.

Radio Tag Technology

In some countries, the radio tag technology used in this equipment to identify the toner container may be subject to authorization, and the use of this equipment may consequently be restricted.

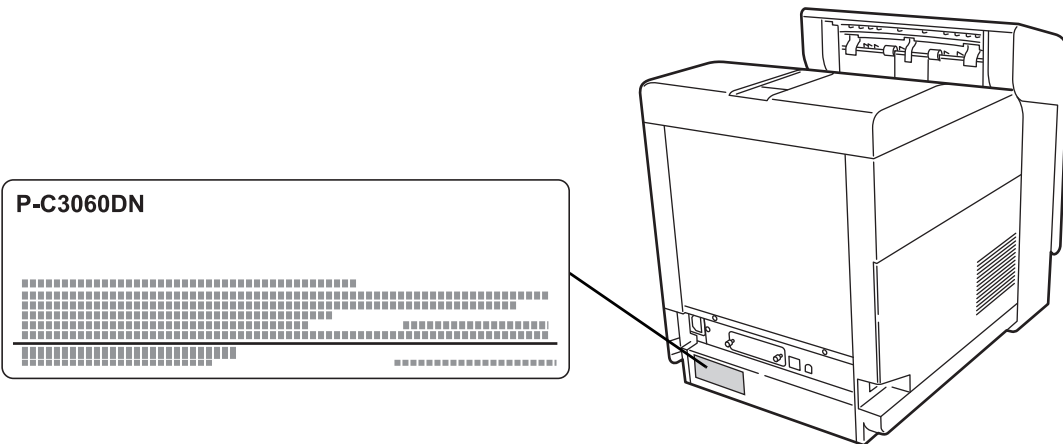
Cautionary Labels

The printer bears any of the following labels.



Label inside the printer (Laser radiation warning)

| | | | |
|--|---|---|--|
| | DANGER - CLASS 3B INVISIBLE LASER RADIATION WHEN OPEN. AVOID DIRECT EXPOSURE TO BEAM. | ATTENZIONE - CLASSE 3B RADIAZIONE LASER INVISIBILE IN CASO DI APERTURA. EVITARE L'ESPOSIZIONE AL FASCIO. | 警告 - 该产品为3B类不可见激光产品。打开盖子后会有激光辐射。请避免光束照射。 |
| | ATTENTION - CLASSE 3B RAYONNEMENT LASER INVISIBLE EN CAS D'OUVERTURE. EXPOSITION DANGEREUSE AU FAISCEAU. | PRECAUCION - CLASSE 3B RADIACIONE LASER INVISIBILE CUANDO SE ABRE. EVITAR EXPONERSE AL RAYO. | 警告 - 该产品为3B类不可见激光产品。打开盖子后会有激光辐射。请避免光束照射。 |
| | VORSICHT - KLASSE 3B UNSICHTBARE LASERSTRAHLUNG, WENN ABDECKUNG GEÖFFNET. NICHT DEM STRAHL AUSSETZEN. | VARO! - AVATTAESSA OLET ALTTIINA LUOKAN 3B NÄKYMÄTTÖMÄLLE LASERSATEILYLLE. ÄLÄ KATSO SÄTEESEEN. | 위험 - CLASS 3B 불가시 레이저광선을 직접 보지마십시오. |
| | | | 警告 - ここを開くとクラス3B不可視レーザー光がでます。ビームを直接見たり、触れないでください。 |



CDRH Regulations

The Center for Devices and Radiological Health (CDRH) of the U.S. Food and Drug Administration implemented regulations for laser products on August 2, 1976. These regulations apply to laser products manufactured after August 1, 1976. Compliance is mandatory for products marketed in the United States. A label indicating compliance with the CDRH regulations must be attached to laser products marketed in the United States.

Ozone concentration

The printers generate ozone gas (O₃) which may concentrate in the place of installation and cause an unpleasant smell. To minimize the concentration of ozone gas to less than 0.1 ppm, we recommend you not to install the printer in a confined area where ventilation is blocked.

Safety Instructions Regarding the Disconnection of Power

Caution: The power plug is the main isolation device! Other switches on the equipment are only functional switches and are not suitable for isolating the equipment from the power source.

VORSICHT: Der Netzstecker ist die Hauptisoliervorrichtung! Die anderen Schalter auf dem Gerät sind nur Funktionsschalter und können nicht verwendet werden, um den Stromfluß im Gerät zu unterbrechen.

Canadian Department of Communications Compliance Statement

This Class B digital apparatus complies with Canadian ICES-003.

Avis de conformité aux normes du ministère des Communications du Canada

Cet appareil numérique de la classe B est conforme à la norme NMB-003 du Canada.

EN ISO 7779

Maschinenlärminformations-Verordnung 3. GPSGV, 06.01.2004: Der höchste Schalldruckpegel beträgt 70 dB (A) oder weniger gemäß EN ISO 7779.

EK1-ITB 2000

Das Gerät ist nicht für die Benutzung im unmittelbaren Gesichtsfeld am Bildschirmarbeitsplatz vorgesehen. Um störende Reflexionen am Bildschirmarbeitsplatz zu vermeiden, darf dieses Produkt nicht im unmittelbaren Gesichtsfeld platziert werden.

Disclaimer

We will not be liable to customers or any other person or entity for any loss or damage caused or alleged to be caused directly or indirectly by equipment sold or furnished by us, including but not limited to, any interruption of service, loss of business or anticipatory profits, or consequential damages resulting from the use or operation of the equipment or software.

Energy Saving Control Function

The device comes equipped with a **Low Power Mode** where energy consumption is reduced after a certain amount of time elapses since the device was last used, as well as a **Sleep** where printer functions remain in a waiting state but power consumption is still reduced to a minimum when there is no activity with the device within a set amount of time.

Low Power Mode

The device automatically enters Low Power Mode when 1 minute has passed since the device was last used. The amount of time of no activity that must pass before Low Power Mode is activated may be lengthened. For more information refer to *Low Power Timer (Low Power Mode timer timeout time)* section of the *Advanced Operation Guide*.

Sleep

The device automatically enters Sleep when 15 minutes have passed since the device was last used. The amount of time of no activity that must pass before Sleep is activated may be lengthened. For more information, refer to *Sleep Timer (Sleep timer timeout setting)* section of the *Advanced Operation Guide*.

Automatic 2-Sided Print Function

This device includes 2-sided printing as a standard function. For example, by printing two 1-sided originals onto a single sheet of paper as a 2-sided print, it is possible to lower the amount of paper used. For more information refer to *Duplex (Duplex Printing)* section of the *Advanced Operation Guide*.

Printing in duplex mode reduces paper consumption and contributes to the conservation of forest resources. Duplex mode also reduces the amount of paper that must be purchased, and thereby reduces cost. It is recommended that machines capable of duplex printing be set to use duplex mode by default.

Resource Saving - Paper

For the preservation and sustainable use of forest resources, it is recommended that recycled as well as virgin paper certified under environmental stewardship initiatives or carrying recognised ecolabels, which meet EN 12281:2002^{*1} or an equivalent quality standard, be used.

This machine also supports printing on 64 g/m² paper. Using such paper containing less raw materials can lead to further saving of forest resources.

*1: EN12281:2002 "Printing and business paper - Requirements for copy paper for dry toner imaging processes"

Your sales or service representative can provide information about recommended paper types.

Environmental benefits of "Power Management"

To reduce power consumption when idle, this machine is equipped with a power management function that automatically activates energy-saving mode when the machine is idle for a certain period of time.

Although it takes the machine a slight amount of time to return to READY mode when in energy-saving mode, a significant reduction in energy

consumption is possible. It is recommended that the machine be used with the activation time for energy-saving mode set to the default setting.

Energy Star (ENERGY STAR®) Program



We have determined as a participating company in the International Energy Star Program that this product is compliant with the standards laid out in the International Energy Star Program.

ENERGY STAR® is a voluntary energy efficiency program with the goal of developing and promoting the use of products with high energy efficiency in order to help prevent global warming. By purchasing ENERGY STAR® qualified products, customers can help reduce emissions of greenhouse gases during product use and cut energy-related costs.

Installation Precautions

Environment

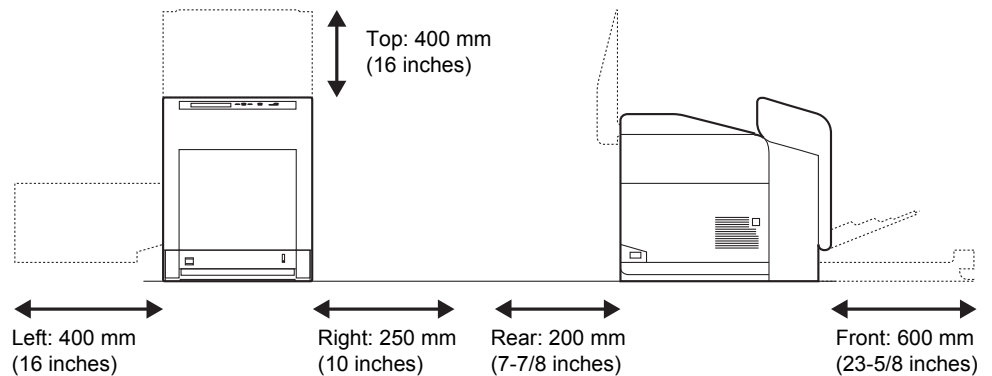


CAUTION Avoid placing the printer on or in locations which are unstable or not level. Such locations may cause the printer to fall. This type of situation presents a danger of personal injury or damage to the printer.

Avoid locations with humidity or dust and dirt. If dust or dirt becomes attached to the power plug, clean the plug to avoid the danger of fire or electrical shock.

Avoid locations near radiators, heaters, or other heat sources, or locations near flammable items, to avoid the danger of fire.

To keep the printer cool and facilitate changing of parts and maintenance, allow access space as shown below. Leave adequate space, especially around the side cover, to allow air to be properly ventilated from the printer.



Other Precautions

Adverse environmental conditions may affect the safe operation and performance of the printer. Install in an air-conditioned room (recommended room temperature: around 23 °C, humidity: around 60 % RH) and avoid the following locations when selecting a site for the printer.

- Avoid locations near a window or with exposure to direct sunlight.
- Avoid locations with vibrations.
- Avoid locations with drastic temperature fluctuations.
- Avoid locations with direct exposure to hot or cold air.
- Avoid poorly ventilated locations.

If the flooring is of a soft material, it may be damaged by the casters when this product is moved after installation.

Power Supply/Grounding the Printer



WARNING Do not use a power supply with a voltage other than that specified. Avoid multiple connections in the same outlet. These types of situations present a danger of fire or electrical shock.

Plug the power cord securely into the outlet. If metallic objects come in contact with the prongs on the plug, it may cause a fire or electric shock.

Always connect the printer to an outlet with a ground connection to avoid the danger of fire or electrical shock in case of an electric short. If an earth connection is not possible, contact your service representative.

Other Precautions

Connect the power plug to the closest outlet possible to the printer.

Handling of Plastic Bags



WARNING Keep the plastic bags that are used with the printer away from children. The plastic may cling to their nose and mouth causing suffocation.

Precautions for Use

Cautions when Using the Printer

- **Do not** place metallic objects or containers with water (flower vases, flower pots, cups, etc.) on or near the printer. This type of situation presents a danger of fire or electrical shock should they fall inside.
- **Do not** remove any of the covers from the printer as there is a danger of electrical shock from high voltage parts inside the printer.
- **Do not** damage, break or attempt to repair the power cord. Do not place heavy objects on the cord, pull it, bend it unnecessarily or cause any other type of damage. These types of situations present a danger of fire or electrical shock.
- **Never** attempt to repair or disassemble the printer or its parts as there is a danger of fire, electrical shock or damage to the laser. If the laser beam escapes, there is a danger of it causing blindness.
- If the printer becomes excessively hot, smoke appears from the printer, there is an odd smell, or any other abnormal situation occurs, there is a danger of fire or electrical shock. Turn the power switch OFF (O) immediately, remove the power plug from the outlet and contact your service representative.
- If anything harmful (paper clips, water, other fluids, etc.) falls into the printer, turn the power switch OFF (O) immediately. Next, remove the power plug from the outlet to avoid the danger of fire or electrical shock. Then contact your service representative.
- **Do not** remove or connect the power plug with wet hands, as there is a danger of electrical shock.
- **Always** contact your service representative for maintenance or repair of internal parts.
- **Do not** pull the power cord when removing it from the outlet. If the power cord is pulled, the wires may become broken and there is a

danger of fire or electrical shock. (Always grasp the power plug when removing the power cord from the outlet.)

- **Always** remove the power plug from the outlet when moving the printer. If the power cord is damaged, there is a danger of fire or electrical shock.
- If the printer will not be used for a short period of time (overnight, etc.), turn the power switch OFF (O). If it will not be used for an extended period of time (vacations, etc.), remove the power plug from the outlet for safety purposes during the time the printer is not in use.
- For safety purposes, **always** remove the power plug from the outlet when performing cleaning operations.
- If dust accumulates within the printer, there is a danger of fire or other trouble. It is therefore recommended that you consult with your service representative in regard to cleaning of internal parts. This is particularly effective if accomplished prior to seasons of high humidity. Consult with your service representative in regard to the cost of cleaning the internal parts of the printer.

Other Precautions

- **Do not** place heavy objects on the printer or cause other damage to the printer.
- **Do not** open the top/left/rear cover, turn off the main switch, or pull out the power plug during printing.
- During printing, some ozone is released, but the amount does not cause any ill effect to one's health. If, however, the printer is used over a long period of time in a poorly ventilated room or when printing an extremely large number of copies, the smell may become unpleasant. To maintain the appropriate environment for print work, it is suggested that the room be properly ventilated.
- **Do not** touch electrical parts, such as connectors or printed circuit boards. They could be damaged by static electricity.
- **Do not** attempt to perform any operations not explained in this handbook.
- If the printer will not be used for an extended period of time, remove the paper from the cassette, return it to its original package and reseal it.



CAUTION Use of controls or adjustments or performance of procedures other than those specified herein may result in hazardous radiation exposure.

Cautions for Toner Handling

- **Do not** incinerate toner and toner containers. Dangerous sparks may cause burn.
- **Never** open the toner container.
- **Do not** inhale the toner.
- If you get toner on your hands, **do not** rub your eyes or touch your mouth. Wash the toner from your hands.
- For the disposal of the old toner container, consult your service technician or dispose of the toner or toner containers in accordance with Federal, State and Local rules and regulations.

About the Operation Guide

This Operation Guide has the following chapters:

Chapter 1 - Machine Parts

This chapter explains the names of parts.

Chapter 2 - Printing Operation

This chapter explains how to print from your workstation.

Chapter 3 - Maintenance

This chapter explains how to replace the toner container and how to care for your printer.

Chapter 4 - Troubleshooting


This chapter explains how to handle printer problems that may occur, such as paper jams.

Chapter 5 - Specifications

This chapter lists the printer's specifications.

Conventions

This manual uses the following conventions.

| Convention | Description | Example |
|------------------------|---|--|
| Italic Typeface | Used to emphasize a key word, phrase or reference to additional information. | To replace the toner container, refer to <i>Toner Container Replacement on page 3-2</i> . |
| Bold | Used to denote buttons on the software. | To start printing, click OK . |
| Bracket Bold | Used to denote operation panel keys. | Press [GO] to resume printing. |
| Note | Used to provide additional or useful information about a function or feature. |  Note Check with your network administrator for the network address settings. |
| Important | Used to provide important information. | IMPORTANT Ensure paper is not folded, curled, or damaged. |
| Caution | Cautions are statements that suggest <i>mechanical</i> damage as a result of an action. | CAUTION Components inside the fuser cover are hot. Do not touch it with your hands as it may result in burn injury. |
| Warning | Used to alert users to the possibility of <i>personal</i> injury. | WARNING High voltage is present in the charger section. |

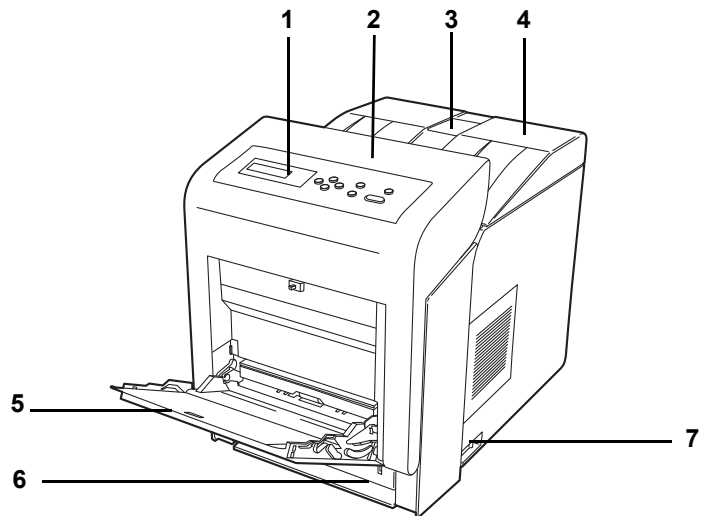
1 Machine Parts

This chapter provides explanations and illustrations for you to determine the parts and their functions. Try to be familiar with the names and functions of these parts for correct use and optimal performance.

This chapter contains explanations on the following topics:

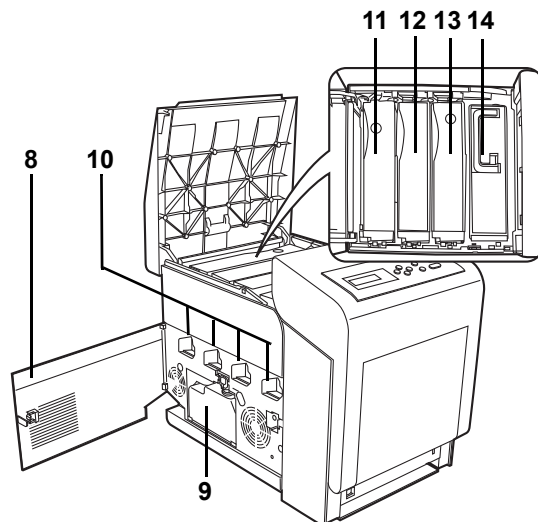
| | |
|---|------------|
| Components at the Front of the Printer | 1-2 |
| Components at the Left of the Printer | 1-2 |
| Internal Components | 1-3 |
| Components at the Rear of the Printer | 1-3 |
| Operation Panel | 1-4 |

Components at the Front of the Printer



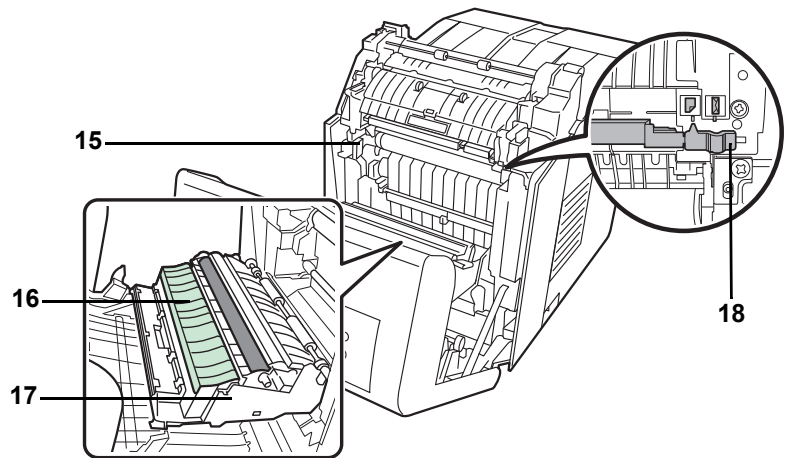
- 1 Operation Panel
- 2 Front Cover
- 3 Paper Stopper
- 4 Top Cover (Top Tray)
- 5 MP (Multi-Purpose) Tray
- 6 Paper Cassette
- 7 Power Switch

Components at the Left of the Printer



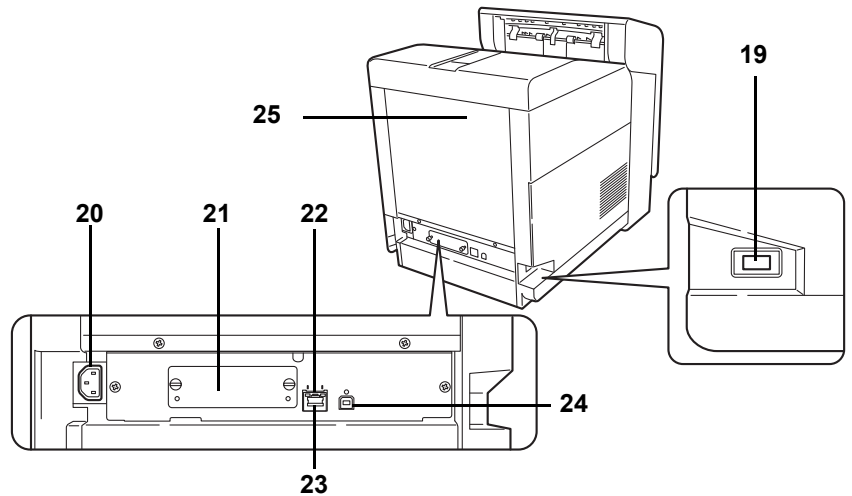
- 8 Left Cover
- 9 Waste Toner Box
- 10 Main Charger Units on the Drum Units
- 11 Magenta Toner Container (M)
- 12 Cyan Toner Container (C)
- 13 Yellow Toner Container (Y)
- 14 Black Toner Container (K)

Internal Components



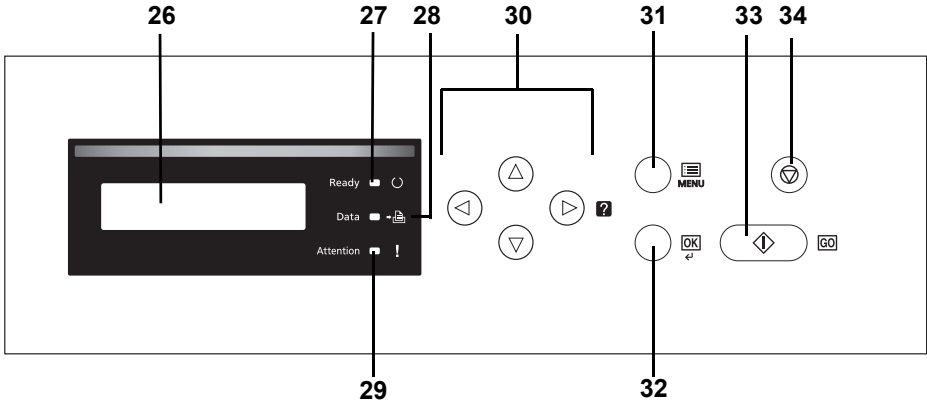
- 15 Paper Transfer Unit
- 16 Paper Ramp
- 17 Duplex Unit
- 18 Envelope Switch

Components at the Rear of the Printer



- 19 USB Memory Slot
- 20 Power Cord Connector
- 21 Option Interface Slot
- 22 Network Indicators
- 23 Network Interface Connector
- 24 USB Interface Connector
- 25 Rear Cover

Operation Panel



- 26 Message Display
- 27 Ready Indicator
- 28 Data Indicator
- 29 Attention Indicator
- 30 Arrow Keys
- 31 [MENU] Key
- 32 [OK] Key
- 33 [GO] Key
- 34 [Cancel] Key

2 Printing Operation

This chapter contains explanations on the following topics:

| | |
|---|-------------|
| Changing Network Interface Parameters | 2-2 |
| Printing a Network Interface Status Page | 2-4 |
| Embedded Web Server RX | 2-5 |
| Installing the Printer Driver | 2-14 |
| Printing from Application Software | 2-21 |
| Printing by AirPrint | 2-22 |
| Status Monitor | 2-23 |
| Energy Saver Function | 2-27 |

Changing Network Interface Parameters

This printer supports TCP/IP, TCP/IP (IPv6), NetWare, AppleTalk, IPP, SSL Server and the IPSec protocols and Security Level.

The table below shows the items required for each of the settings.

Configure the printer's network parameters as appropriate for your PC and your network environment.

For details of the procedure, refer to the *Using the Operation Panel* section of the *Advanced Operation Guide*.



Note When Embedded Web Server RX is used, network parameters and security settings can be conveniently changed and checked from your PC. For more information, refer to *Embedded Web Server RX User Guide*. If the optional IB-50 or IB-51 is installed then NetWare and AppleTalk settings are possible. For details, refer to *Optional Network* section of the *Advanced Operation Guide*.

| Menu | Submenu | Setting | | |
|-------------|----------|-------------------|---------------|---------------|
| Network | TCP/IP | On/Off | | |
| | | DHCP | On/Off | |
| | | Auto-IP | On/Off | |
| | | IP Address | IP address | |
| | | Subnet Mask | IP address | |
| | | Gateway | IP address | |
| | | Bonjour | On/Off | |
| | | TCP/IP (IPv6) | On/Off | |
| | | RA (Stateless) | On/Off | |
| | | DHCPv6 | On/Off | |
| | Security | I/F Block | USB Host | Block/Unblock |
| | | | USB Device | Block/Unblock |
| Option I/F | | | Block/Unblock | |
| USB Storage | | | Block/Unblock | |
| | | WSD-PRINT | On/Off | |
| | | Enhanced WSD | On/Off | |
| | | EnhancedWSD (SSL) | On/Off | |
| | | IPP | On/Off | |

| Menu | Submenu | Setting |
|------|----------------|---|
| | SSL Server | On/Off |
| | DES | On/Off |
| | 3DES | On/Off |
| | AES | On/Off |
| | IPP over SSL | On/Off |
| | HTTPS | On/Off |
| | IPSec | On/Off |
| | LAN Interface | Auto/10BASE-Half/ 10BASE-Full/ 100BASE-Half/ 100BASE-Full/ 1000BASE-T |
| | Security Level | High/Low |



Note After all network related settings have been done, turn the machine **OFF** and **ON** again. This is mandatory to make the settings effective!

Printing a Network Interface Status Page

You can print out a status page for the network interface. The network status page shows the network addresses, and other information under various network protocols about the network interface.

Adjust/Maintenance

Adjust/Maintenance is used to adjust the print quality and to carry out printer maintenance.

The options available in Adjust/Maintenance are as follows:

- Color Calibration
- Registration Normal
- Registration Details
- Restart Printer
- Service

IMPORTANT *Service* is primarily a menu used by service personnel for maintenance work. There is no need for customers to use this menu.

```
Adjust/Maintenance >
```

- 1** Press **[MENU]**.
- 2** Press Δ or ∇ repeatedly until `Adjust/Maintenance >` appears.

- 3** Press \triangleright while `Adjust/Maintenance >` is displayed.

- 4** Press Δ or ∇ repeatedly until `>Service >` appears.

- 5** Press \triangleright .

- 6** Press Δ or ∇ repeatedly until `>>Print Network Status Page` appears.

```
>>Print  
Network Status Page ?
```

- 7** Press **[OK]**. A question mark (?) appears.

- 8** Press **[OK]**. `Processing` appears and a status page is printed out.

- 9** When printing ends, the display returns to `Ready`.

Embedded Web Server RX

If the machine is connected to the network, you can configure various settings using Embedded Web Server RX.

This section explains how to access Embedded Web Server RX, and how to change security settings and the host name.

For details on Embedded Web Server RX, refer to the *Embedded Web Server RX User Guide*.



Note To fully access the features of the Embedded Web Server RX pages, enter the User Name and Password and click **Login**. Entering the predefined administrator password allows the user to access all pages, including Document Box, and Settings on the navigation menu. The factory default setting for the default user with administrator privileges is shown below.

| | |
|------------------------|--------------|
| Login User Name | Admin |
| Login Password | Admin |

* Upper case and lower case letters are distinguished (case sensitive).

Settings that the administrator and general users can configure in Embedded Web Server RX are as follows.

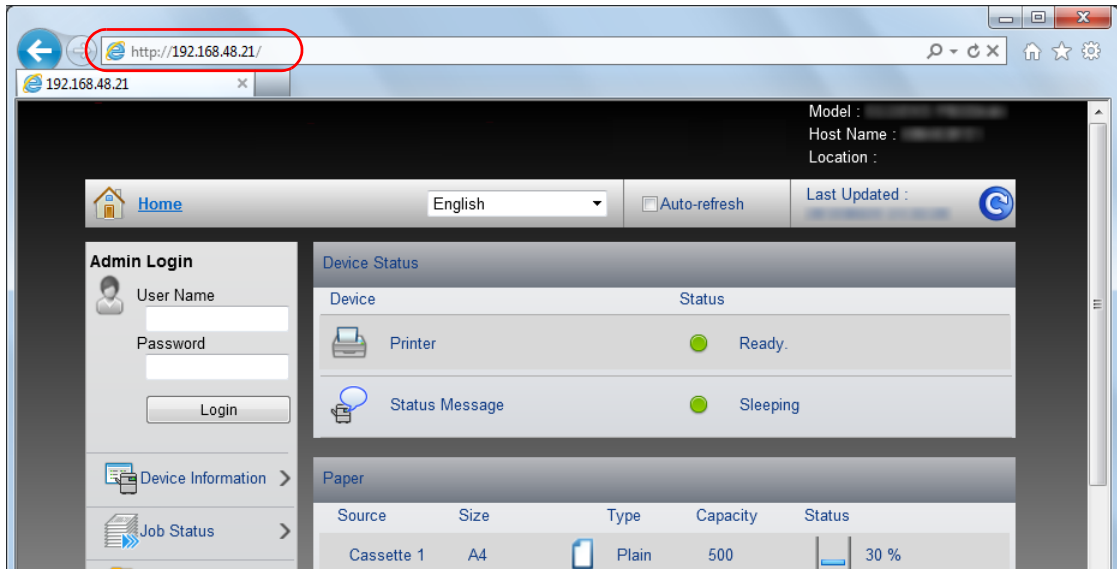
| Setting | Description | Administ-rator | General User |
|----------------------------|--|-----------------------|-----------------------|
| Device Information | The machine's structure can be checked. Configuration, Counter, About Embedded Web Server RX | <input type="radio"/> | <input type="radio"/> |
| Job Status | Displays all device information, including print jobs and job log history. Printing Jobs Status, Printing Job Log | <input type="radio"/> | <input type="radio"/> |
| Document Box | Add or delete document boxes, or delete documents within a document box. Custom Box, Job Box Settings | <input type="radio"/> | <input type="radio"/> |
| Device Settings | Configure the advanced settings of the machine. Paper/Feed/Output, Energy Saver/Timer, Date/Time, System | <input type="radio"/> | — |
| Function Settings | Configure the advanced function settings. Common/Job Defaults, Printer, E-mail | <input type="radio"/> | — |
| Network Settings | Configure the network advanced settings. General, TCP/IP, Protocol | <input type="radio"/> | — |
| Security Settings | Configure the security advanced settings. Device Security, Network Security, Certificates | <input type="radio"/> | — |
| Management Settings | Configure the advanced management settings. Job Accounting, Authentication, Notification/Report, History Settings, SNMP, Reset | <input type="radio"/> | — |

Accessing Embedded Web Server RX

- 1 Launch your Web browser.
- 2 In the address or location bar, enter the machine's IP address or the host name.

Examples: <https://192.168.48.21/> (for IP address)

<https://P001> (if the host name is "P001")



The web page displays basic information about the machine and Embedded Web Server RX as well as their current status.



Note If the screen **There is a problem with this website's security certificate.** is displayed, configure the certificate. For details on Certificates, refer to the *Embedded Web Server RX User Guide*.

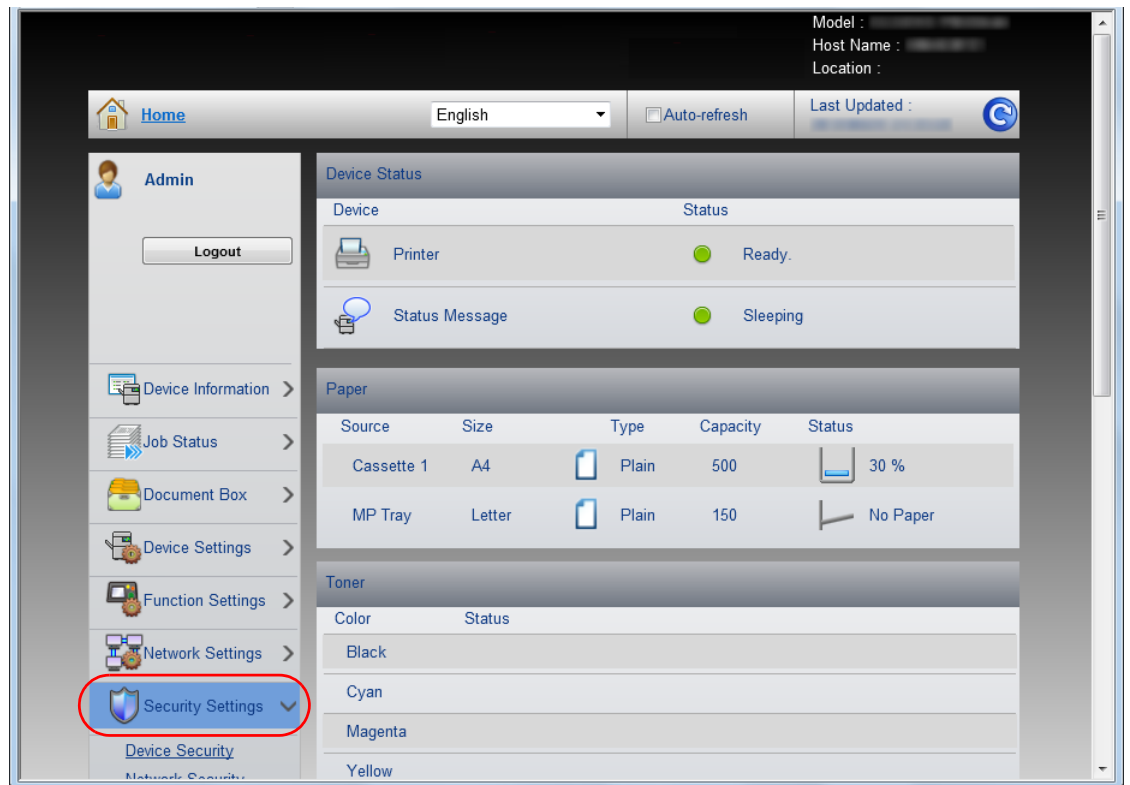
You can also continue the operation without configuring the certificate.

- 3 Select a category from the navigation bar on the left of the screen. When you log in to the machine as an administrator, you will see **Device Settings, Function Settings, Network Settings, Security Settings, and Management Settings.**

Changing Security Settings

This section explains how to change the security settings.

- 1 Access Embedded Web Server RX by referring to *Accessing Embedded Web Server RX* on page 2-6.
- 2 From the **Security Settings** menu, select the setting you want to configure. The configurable settings are **Device Security**, **Network Security**, and **Certificates**.



Note The configurable settings within **Device Security** and **Network Security** can also be configured from the machine's System Menu.

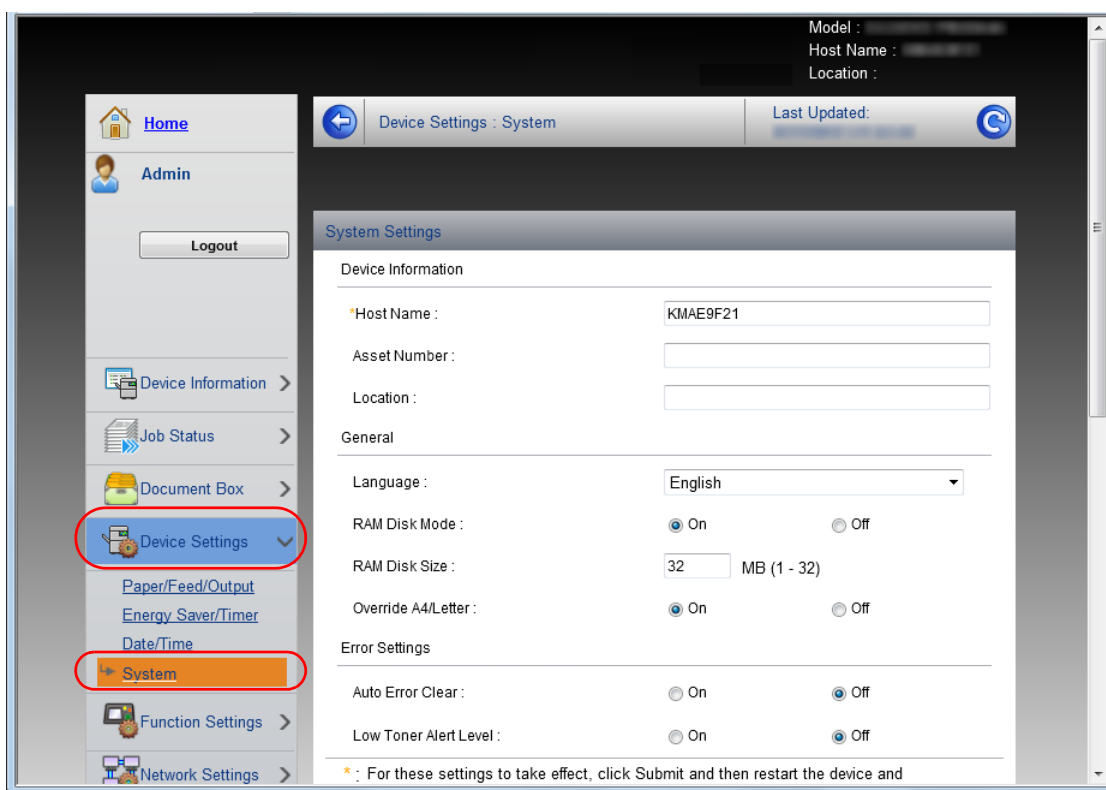
For details, refer to the *Using the Operation Panel* section of the *Advanced Operation Guide*.

For details on settings related to certificates, refer to the *Embedded Web Server RX User Guide*.

Changing Device Information

Change the device information of the machine.

- 1 Access Embedded Web Server RX by referring to *Accessing Embedded Web Server RX* on page 2-6.
- 2 From the **Device Settings** menu, select **System**.



- 3 Enter the device information, and then click **Submit**.

IMPORTANT After changing the setting, restart the network or turn the machine OFF and then ON.
To restart the network interface card, click **Reset** in the **Management Settings** menu, and then click **Restart Network** in **Restart**.

E-mail settings

By configuring the SMTP settings, you can send E-mail notifications on completed jobs.

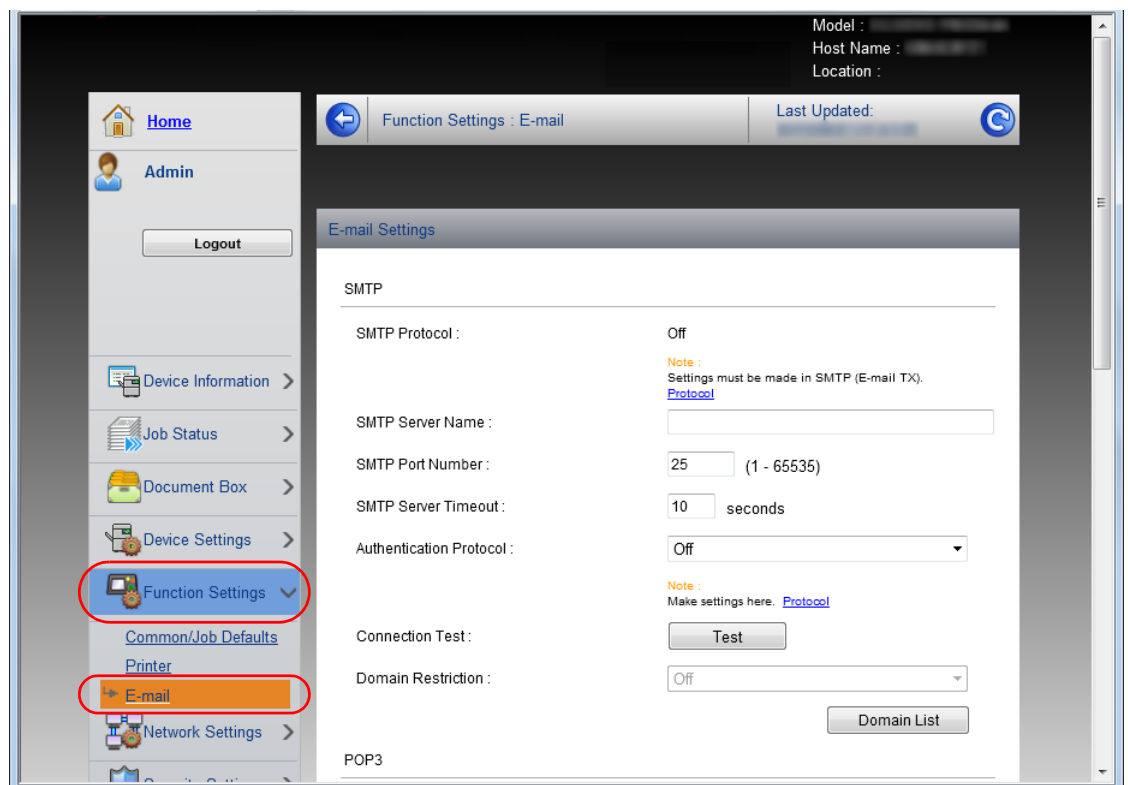
To use this function, this machine must be connected to a mail server using the SMTP protocol.

In addition, check the following.

- The network environment used to connect this machine to the mail server
A full-time connection via a LAN is recommended.
- SMTP settings
Use Embedded Web Server RX to register the IP address or host name of the SMTP server.
- If limits have been set on the size of E-mail messages, it may not be possible to send very large E-mails.

The procedure for specifying the SMTP settings is explained below.

- 1** Access Embedded Web Server RX by referring to *Accessing Embedded Web Server RX* on page 2-6.
- 2** From the **Function Settings** menu, click **E-mail**.



3 Enter the appropriate values to each field.

| Setting | Description |
|--------------------------------|---|
| SMTP | Set to send e-mail from the machine. |
| SMTP Protocol | Set SMTP protocol. Set the SMTP (E-mail TX) setting to On on the Protocol Settings page. |
| SMTP Server Name | Enter the host name or IP address of the SMTP server. |
| SMTP Port Number | Specify the port number to be used for SMTP. Use the SMTP default port 25. |
| SMTP Server Timeout | Set the amount of time to wait before time-out in seconds. |
| Authentication Protocol | Set whether SMTP authentication is used. To use authentication, enter the user information for authentication. |
| SMTP Security | Set SMTP security. Turn on SMTP Security in SMTP (E-mail TX) on the Protocol Settings page. |
| POP before SMTP Timeout | Specify the time in seconds until the connection to the POP server times out. This can be set when POP before SMTP is selected in Authentication Protocol . |
| Connection Test | Tests to confirm that the settings are correct. |
| Domain Restriction | Set whether or not domains are restricted. Click the Domain List and enter the domain names of addresses to be allowed or rejected. Restriction can also be specified by e-mail address. |
| POP3 | Set to receive e-mail at the machine. |
| POP3 Protocol | Set POP3 protocol. Set the POP3 (E-mail RX) setting to On on the Protocol Settings page. |
| Check Interval | Specify the interval for checking for incoming e-mail in minutes. |
| Run once now | Click Receive to connect to the POP3 server immediately and check for incoming E-mails. |
| Domain Restriction | Set whether or not domains are restricted. Click the Domain List and enter the domain names of addresses to be allowed or rejected. Restriction can also be specified by e-mail address. |
| POP3 User Settings | Configure the settings for POP3 user accounts and the POP3 server. You can configure up to three users. |

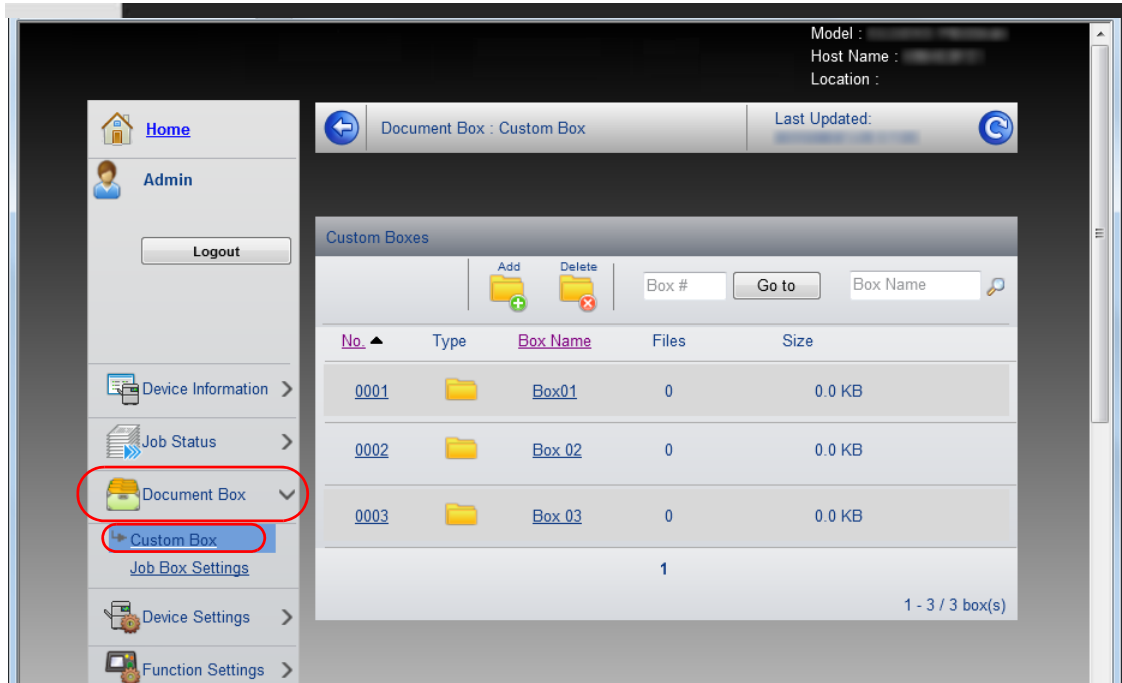
| Setting | | Description |
|----------------------------|-------------------|---|
| E-mail Send Settings | E-mail Size Limit | Enter the maximum size of E-mail that can be sent in kilobytes. When E-mail size is greater than this value, an error message appears and E-mail sending is cancelled. Use this setting if you have set E-mail Size Limit for SMTP server. If not, enter a value of 0 (zero) to enable E-mail sending regardless of the size limit. |
| | Sender Address | Enter the E-mail address of the person responsible for the machine, such as the machine administrator, so that a reply or non-delivery report will go to a person rather than to the machine. The sender address must be entered correctly for SMTP authentication. The maximum length of the sender address is 128 characters. |
| | Signature | Enter the signature. The signature is free form text that will appear at the end of the E-mail body. It is often used for further identification of the machine. The maximum length of the signature is 512 characters. |
| | Function Default | Change the function default settings in Common/Job Defaults Settings page. |

4 Click **Submit**.

Registering a Custom Box

You can register a custom box from Embedded Web Server RX.

- 1 Access Embedded Web Server RX by referring to *Accessing Embedded Web Server RX on page 2-6*.
- 2 From the **Document Box** menu, click **Custom Box**.

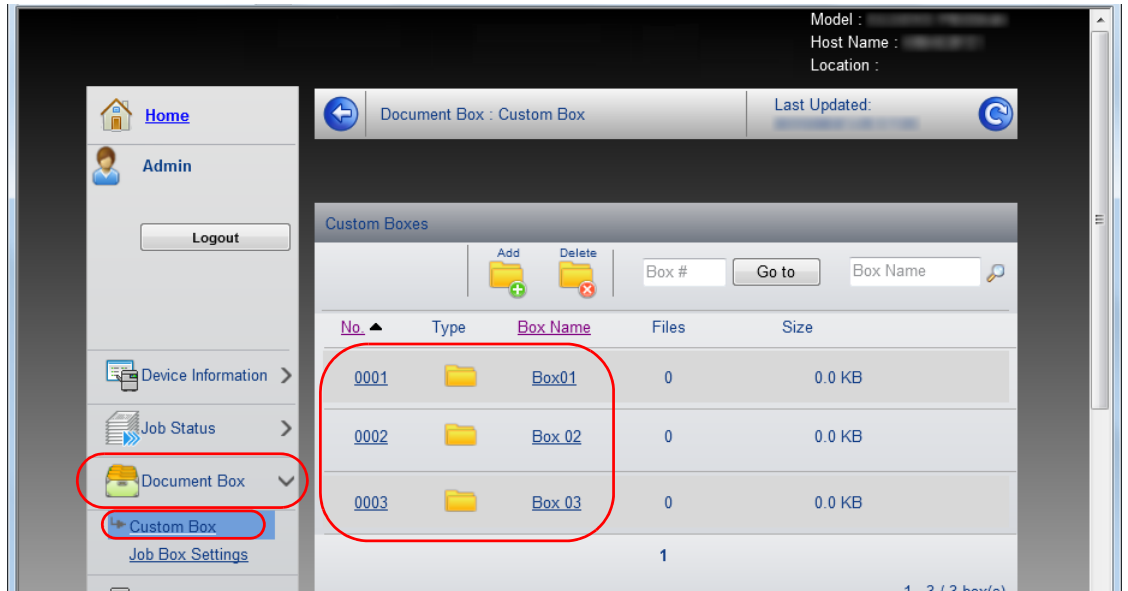


- 3 Click **Add**.
- 4 Enter the box details.
Enter the information for the custom box you want to register. The fields to populate are the same as when registering on the machine. For details, refer to the *Using the Operation Panel* section of the *Advanced Operation Guide*.
- 5 Click **Submit**.

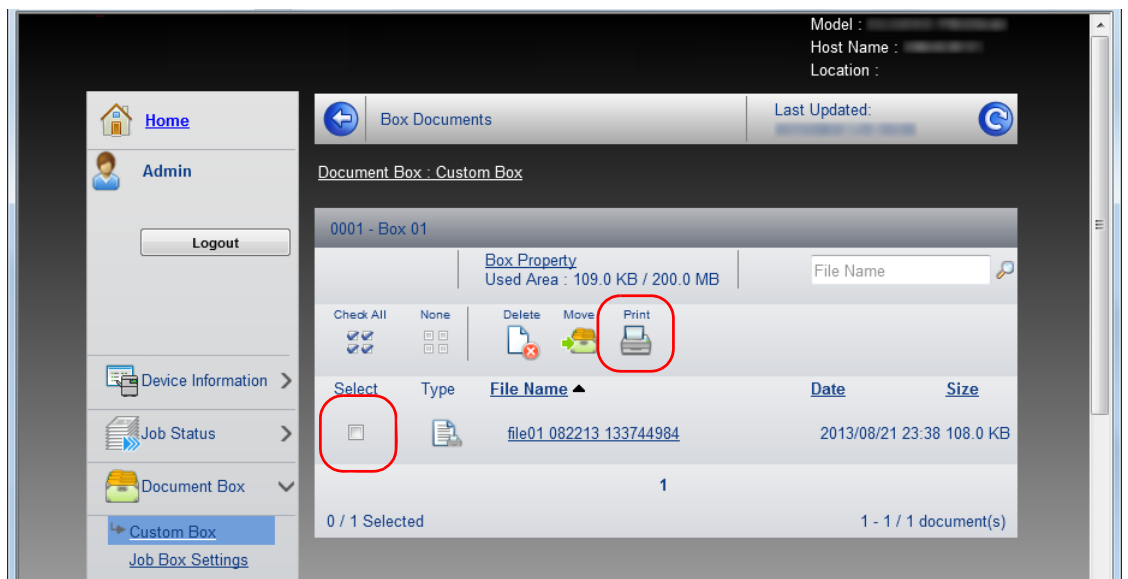
Printing a document stored in a Custom Box

A document stored in a Custom Box can be printed from Embedded Web Server RX.

- 1 Access Embedded Web Server RX by referring to *Accessing Embedded Web Server RX on page 2-6*.
- 2 From the **Document Box** menu, click **Custom Box**.



- 3 Click the number or name of the Custom Box in which the document is stored.
- 4 Select the document you wish to print.
Select the checkbox of the document to be printed.



- 5 Click **Print**.
- 6 For settings that are configurable, refer to *Embedded Web Server RX User Guide*.

Installing the Printer Driver

Ensure the printer is plugged in and connected to the PC before installing the printer driver from the DVD-ROM.



Note Installation on Windows must be done by a user logged on with administrator privileges.

When connected by USB cable, Plug and Play is disabled on this device when in Sleep mode. To continue the installation, press the **GO** key to wake the device from Low Power Mode or Sleep before continuing.

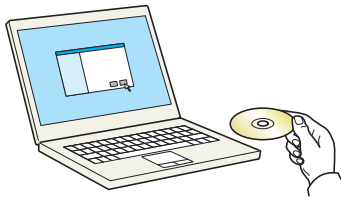
KX XPS DRIVER cannot be installed on Windows XP.

Installing Printer Driver in Windows

Express Install

The following procedure is an example for installing the software in Windows 7 using **Express Install**.

For details, refer to Custom Installation in the *Custom Install on page 2-16*.



- 1 Insert the DVD-ROM.



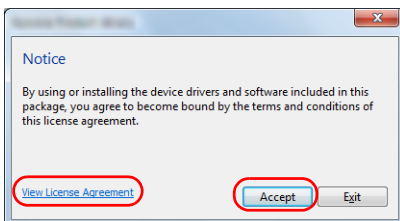
Note Installation on Windows must be done by a user logged on with administrator privileges.

If the **Welcome to the Found New Hardware Wizard** dialog box displays, select **Cancel**.

If the autorun screen is displayed, click **Run setup.exe**.

If the user account management window appears, click **Yes (Allow)**.

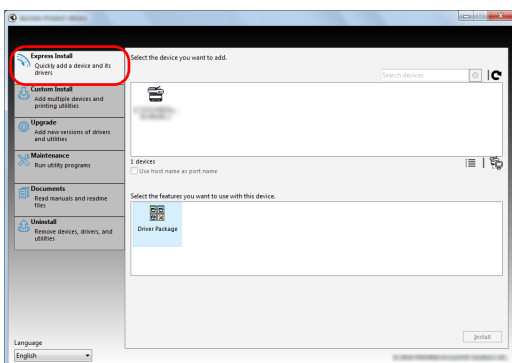
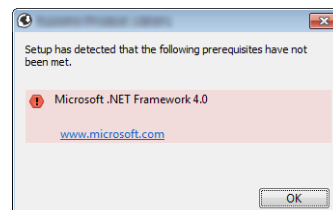
- 2 Click **View License Agreement** and read the License Agreement. Click **Accept**.

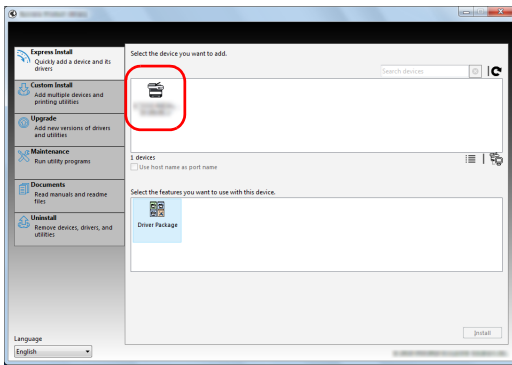


- 3 Select **Express Install** tab.



Note To install Status Monitor, it is necessary to install Microsoft .NET Framework 4.0 beforehand.




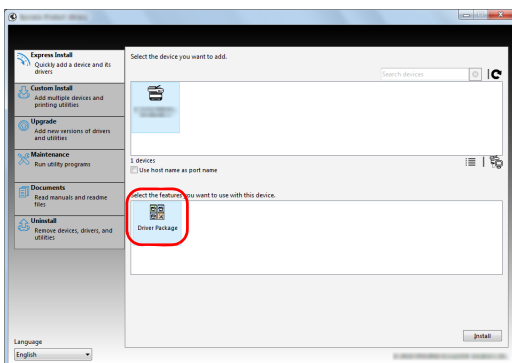


4 Select the device to be installed.

You can also select **Use host name for port name** and set to use the host name of the standard TCP/IP port. (A USB connection cannot be used.)



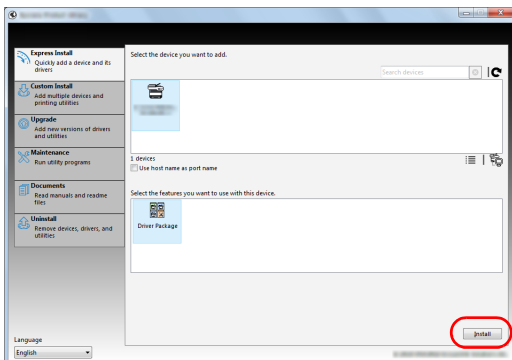
Note The machine cannot be detected unless it is on. If the computer fails to detect the machine, verify that it is connected to the computer via a network or USB cable and that it is turned on and click  (Reload).



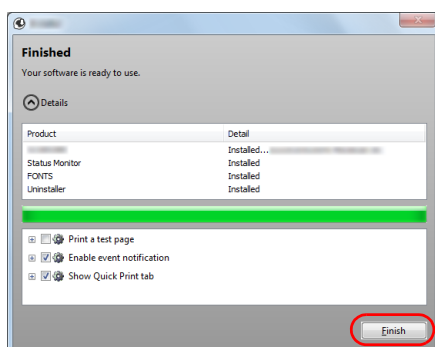
5 Select the package to be installed.

Packages include the following software:

- Driver Package
- Printing System Driver, Status Monitor, Fonts



6 Click **Install**.



7 Finish the installation.

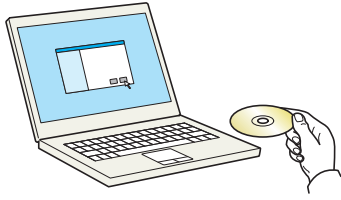
When **Your software is ready to use** appears, you can use the software. To print a test page, click the **Print a test page** checkbox and select the machine.

Click **Finish** to exit the wizard.



Note When you have selected **Device settings** in Windows XP, the dialog box for device setting will appear after **Finish** is clicked. Configure the settings for options installed on the machine. Device settings can be configured after the installation is completed. For details, refer to the Device Settings in the Printing System Driver User Guide on the DVD-ROM.

If a system restart message appears, restart the computer by following the screen prompts. This completes the printer driver installation procedure.



Custom Install

The following procedure is an example for installing the software in Windows 7 using **Custom Install**.

- 1 Insert the DVD-ROM.



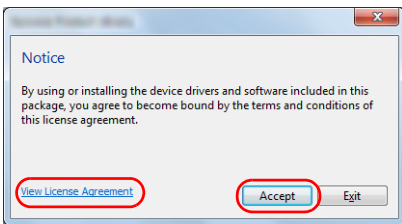
Note Installation on Windows must be done by a user logged on with administrator privileges.

If the **Welcome to the Found New Hardware Wizard** dialog box displays, select **Cancel**.

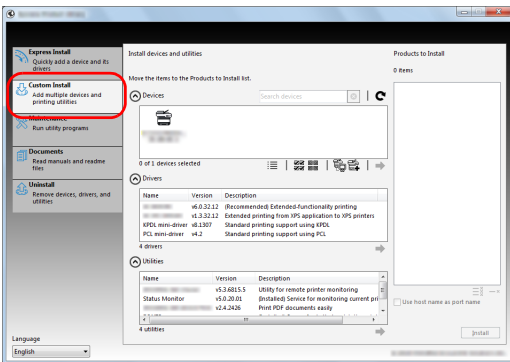
If the autorun screen is displayed, click **Run setup.exe**.

If the user account management window appears, click **Yes (Allow)**.

- 2 Click **View License Agreement** and read the License Agreement. Click **Accept**.



- 3 Select **Custom Install** tab.



- 4 Select the device to be installed, and click the arrow button to move it to the **Products to Install** list.

The following buttons are available.



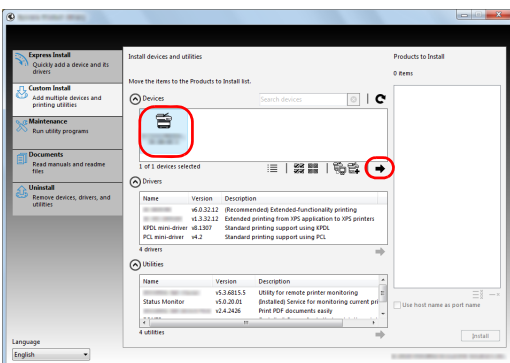
: This button is used to switch the display between icon and text display.

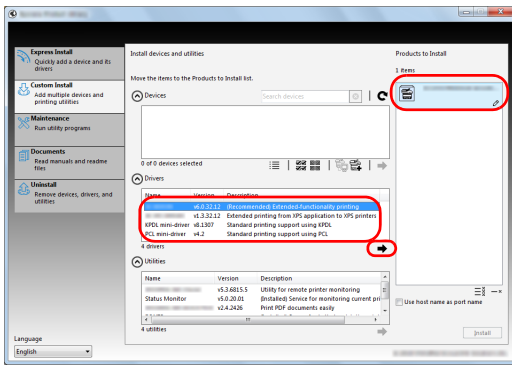


: This button is used to select multiple items.

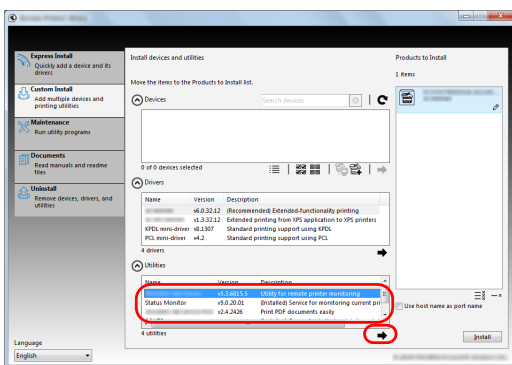


: If the target device is not displayed, press this button to directly select the device to be used.

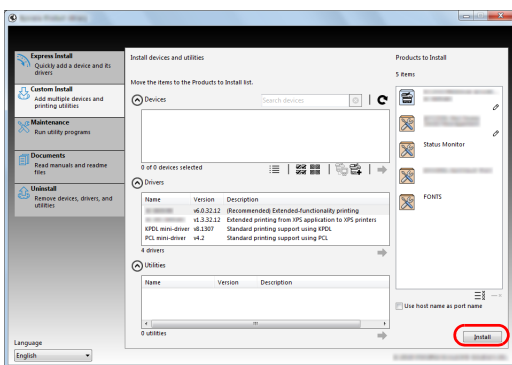




5 Select the device to be installed and driver to be installed, and then click the arrow button to move it to the **Products to Install** list.



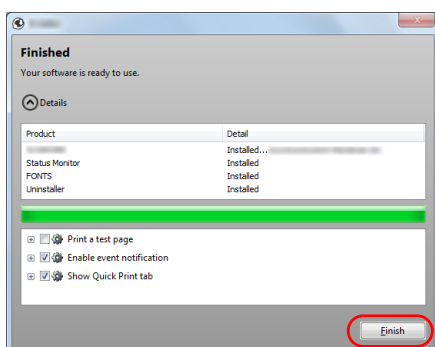
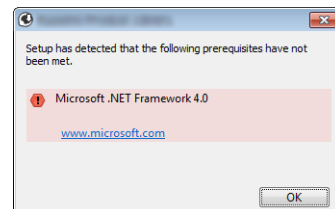
6 Select the utility to be installed, and then click the arrow button to move it to the **Products to Install** list.



7 Click **Install**.



Note To install Status Monitor, it is necessary to install Microsoft .NET Framework 4.0 beforehand.



8 Finish the installation.

When **Your software is ready to use** appears, you can use the software. To print a test page, click the **Print a test page** checkbox and select the machine.

Click **Finish** to exit the wizard.



Note When you have selected **Device settings** in Windows XP, the dialog box for device setting will appear after **Finish** is clicked. Configure the settings for options installed on the machine. Device settings can be configured after the installation is completed. For details, refer to the Device Settings in the *Printing System Driver User Guide* on the DVD-ROM.

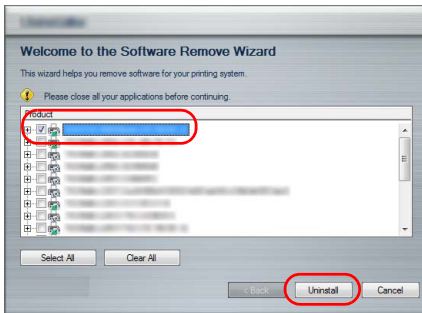
If a system restart message appears, restart the computer by following the screen prompts. This completes the printer driver installation procedure.

Uninstalling the Software


Perform the following procedure to delete the Software from your computer.

 **Note** Uninstallation on Windows must be done by a user logged on with administrator privileges.

- 1 Click **Start** button on the Windows and then select **All Programs**, (name of offer company), and **Uninstall Product Library** to display the Uninstall Wizard.
- 2 Place a check in the check box of the software to be deleted. Click **Uninstall**.




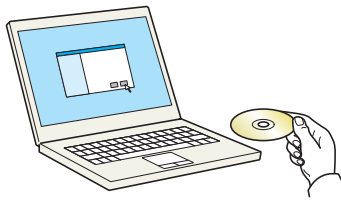
- 3 If a system restart message appears, restart the computer by following the screen prompts. This completes the software uninstallation procedure.

 **Note** The software can also be uninstalled using the Product Library. In the Product Library installation screen, click **Uninstall**, and follow the on-screen instructions to uninstall the software.

Installing Printer Driver in Macintosh

The machine's printer functionality can be used by a Macintosh computer. The following is an explanation for installation in MAC OSX 10.7.

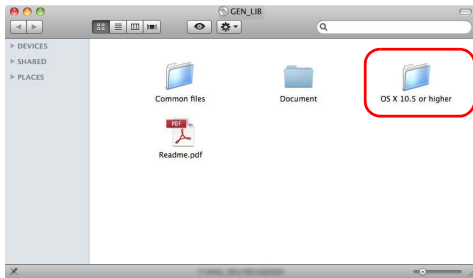
 **Note** Installation on MAC OS must be done by a user logged on with administrator privileges. When printing from a Macintosh computer, set the machine's emulation to **KPDL** or **KPDL(Auto)**. For details, refer to the *Using the Operation Panel* section of the *Advanced Operation Guide*. If connecting by Bonjour, enable Bonjour in the machine's network settings. For details, refer to the *Using the Operation Panel* section of the *Advanced Operation Guide*. In the Authenticate screen, enter the name and password used to log in to the operating system.



1 Insert the DVD-ROM.

2 Double-click the **GEN_LIB** icon.

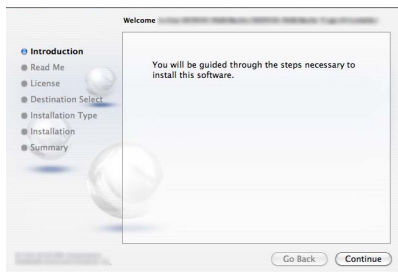
3 Double-click **OS X 10.5 or higher**.



4 Double-click (Brand Name) **OS X 10.5+**.



5 The printer driver installation program starts up.



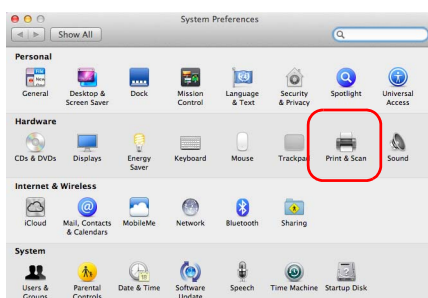
6 Install the printer driver as directed by the instructions in the installation software.

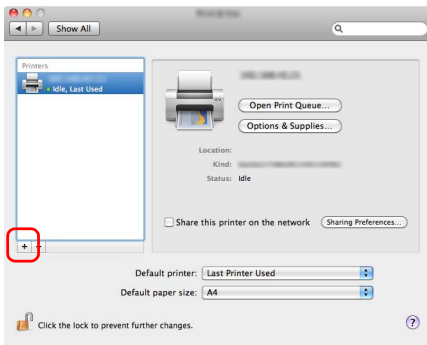
This completes the printer driver installation.

If a USB connection is used, the machine is automatically recognized and connected.

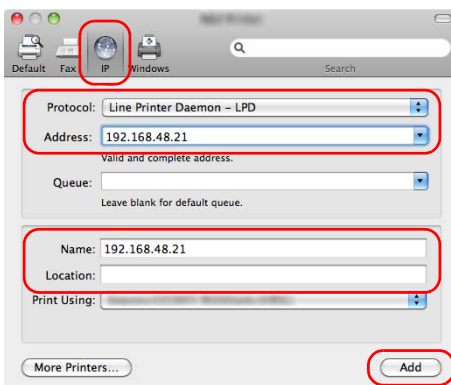
If an IP connection is used, the settings below are required.

7 Open System Preferences and click **Print & Scan**.





8 Click the plus symbol (+) to add the installed printer driver.

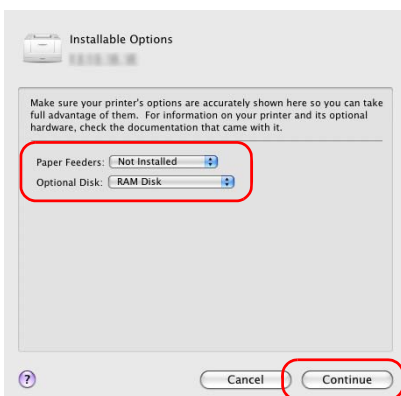


9 Click the IP icon for an IP connection and then enter the IP address and printer name.

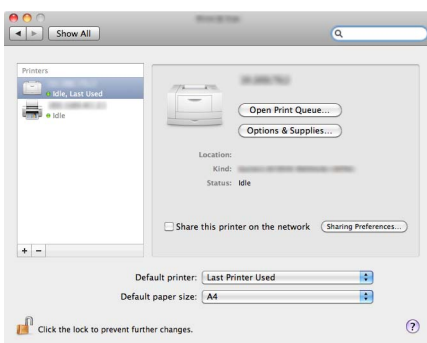
The number entered in **Address** will automatically appear in **Name**. Change if needed.



Note When using a Bonjour connection, select **Default** and click the item that appears in **Printer Name**. The driver with the same name as the machine automatically appears in **Driver**.



10 Select the options available for the machine and click **Continue**.



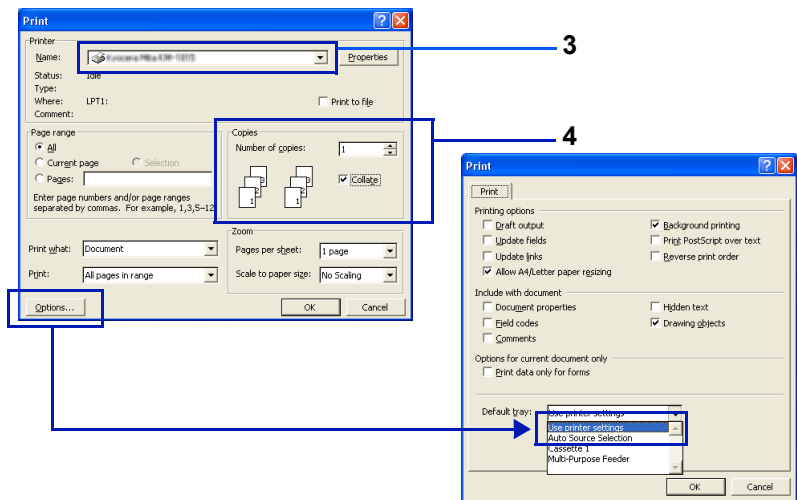
11 The selected printer is added.

Printing from Application Software


The steps required to print a document created with an application are explained below. You can select the printing Paper Size and Output Destination.

- 1 Load the paper required into the paper cassette.
- 2 From the application File menu, select **Print**. The Print dialog box displays.
- 3 Click the drop down list of printer names. All the printers installed in Windows are listed. Click the name of the machine.
- 4 Use **Number of copies** to enter the number of prints required. Up to 999 copies can be entered.

For Microsoft Word, we recommend that you click **Options** and specify **Use printer settings** for the **Default tray**.



- 5 To start printing, click **OK**.

 **Note** For information on how to use the printer driver software, refer to *Printing System Driver User Guide*.

Printing by AirPrint

AirPrint is a printing function that is included standard in iOS 4.2 and later products, and Mac OS X 10.7 and later products.

This function enables you to connect and print to any AirPrint compatible device without installing a printer driver.

To allow the machine to be found when printing by AirPrint, you can set machine location information in Embedded Web Server RX.

For details, refer to the *Embedded Web Server RX User Guide*.

Status Monitor

The Status Monitor monitors the printer status and provides an ongoing reporting function.



Note When you activate Status Monitor, check the status below.

- Printing System Driver is Installed.
- Either *Enhanced WSD* or *EnhancedWSD (SSL)* are set to *On* in *Security* section of the *Advanced Operation Guide*.

Accessing the Status Monitor

The Status Monitor also starts up when printing is started.

Exiting the Status Monitor

Use either of the methods listed below to exit the Status Monitor.

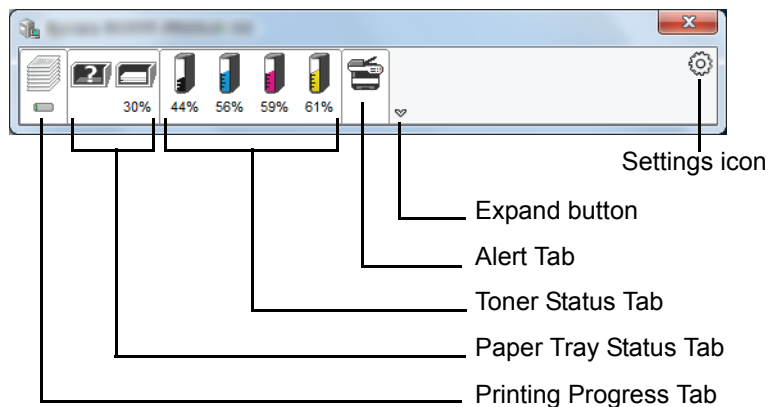
- Exit manually:
Click the settings icon and select **Exit** in the menu to exit the Status Monitor.
- Exit automatically:
The Status Monitor automatically shuts down after 7 minutes if it is not being used.

Status Monitor Display

The display of the Status Monitor is as follows.

Quick View State

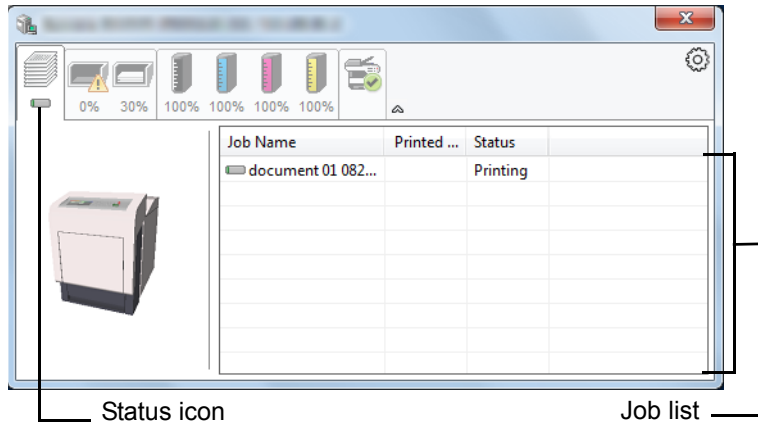
The status of the printer is displayed using icons. Detailed information is displayed when the Expand button is clicked.



Detailed information is displayed by clicking on each icon tab.

Printing Progress Tab

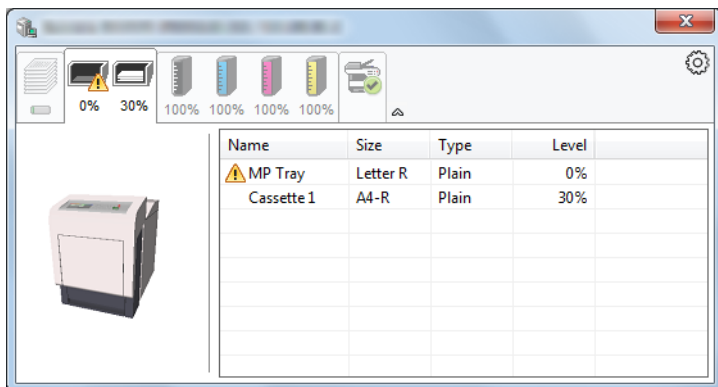
The status of the print jobs is displayed.



Select a job on the job list and it can be canceled using the menu displayed with a right-click.

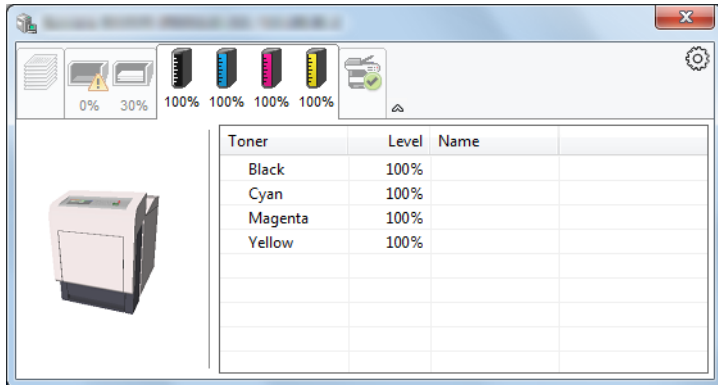
Paper Tray Status Tab

Information is displayed about the paper in the printer and about the amount of paper remaining.



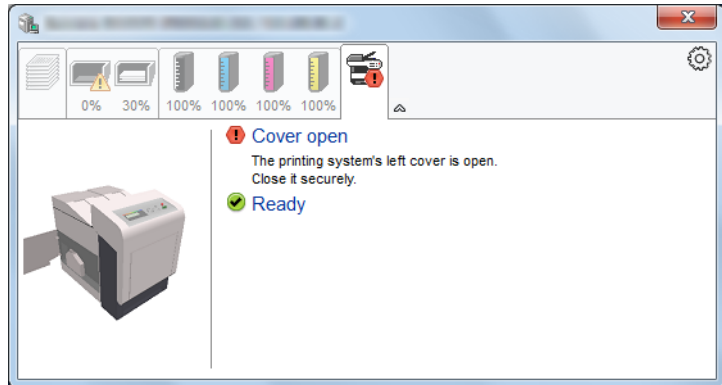
Toner Status Tab

The amount of toner remaining is displayed.



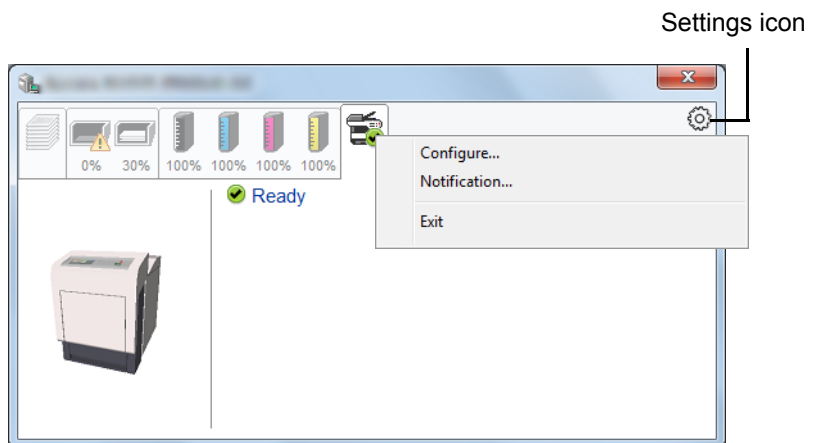
Alert Tab

If an error occurs, a notice is displayed using a 3D image and a message.



Status Monitor Context Menu

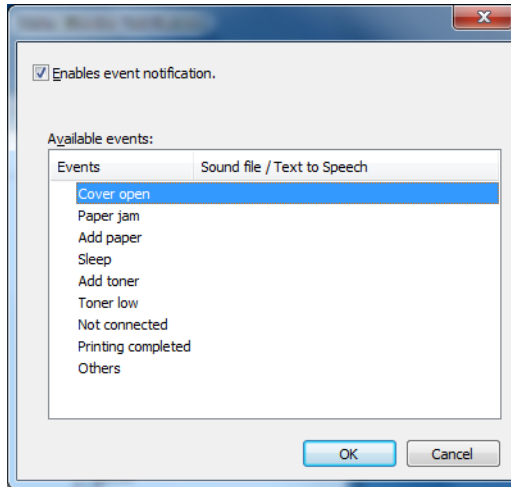
The following menu is displayed when the settings icon is clicked.



- **Configure...**
If the printer is connected to a TCP/IP network and has its own IP address, use a web browser to access the Embedded Web Server RX to modify or confirm the network settings. For more information, refer to the *Embedded Web Server RX User Guide*.
This menu is not displayed when using USB connection.
- **Notification...**
This sets the display of the Status Monitor. For details, refer to *Status Monitor Notification Settings on page 2-26*.
- **Exit**
Exits the Status Monitor.

Status Monitor Notification Settings

The Status Monitor settings and event list details are displayed.



Select whether notification is performed when an error in the event list occurs.

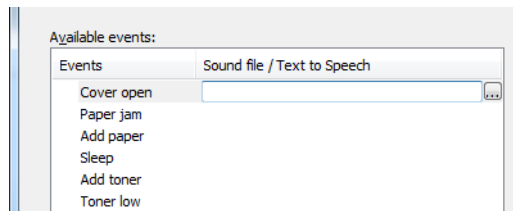
1 Select **Enable event notification**.

If this setting is set to Off, then the Status Monitor will not start up even when printing is executed.

2 Select an event to use with the text to speech function in **Available events**.

3 Click **Sound file / Text to Speech** column.

Click the browse (...) button to notify the event by sound file.



Note The available file format is WAV.

When customizing the message texts to read on the screen aloud, enter the texts in the text box.

Energy Saver Function

Low Power Mode

When the set time (factory setting is 1 minute) elapses after the printer is last used, the printer automatically enters low power mode. The message display backlight and lights turn off and power consumption is reduced. This status is referred to as Low Power Mode.

The amount of time of no activity that must pass before Low Power Mode is activated may be lengthened. For more information refer to *Low Power Timer (Low Power Mode timer timeout time)* section of the *Advanced Operation Guide*.

If print data is received during Low Power Mode, the message display lights up and printing starts.

To resume, press **[GO]**. The printer will be ready to operate within 17 seconds.

Note that ambient environmental conditions, such as ventilation, may cause the machine to respond more slowly.

Sleep

For Europe

When the set time (factory setting is 15 minutes) elapses after the printer is last used, the printer automatically enters sleep mode. The message display backlight and lights turn off to minimize power consumption. This status is referred to as Sleep.

To use the printer, press **[GO]**. The printer will be ready to operate within 24 seconds.

For more information about configuring settings, refer to *Sleep Timer (Sleep timer timeout setting)* section of the *Advanced Operation Guide*.

Except for Europe

When the set time (factory setting is 15 minutes) elapses after the printer is last used, the printer automatically enters sleep mode. The message display backlight and lights turn off to minimize power consumption. This status is referred to as Sleep.

For more information about configuring settings, refer to *Sleep Timer (Sleep timer timeout setting)* section of the *Advanced Operation Guide*.

There are two sleep modes: Quick Recovery and Energy Saver. The default setting is Energy Saver mode.

Quick Recovery Mode

The recovery from the sleep mode is faster than when using Energy Saver mode.

The message display goes off when sleep mode is entered and the Ready indicator flashes.

The machine recovers quickly when **[GO]** is pressed. The machine also automatically recovers and prints when a job is detected.

If print data is received during Sleep, the print job is performed while the message display remains unlit.

To use the printer, press **[GO]**.

Note that ambient environmental conditions, such as ventilation, may cause the machine to respond more slowly.

For more information about configuring settings, refer to *Sleep Timer (Sleep timer timeout setting)* section of the *Advanced Operation Guide*.

Energy Saver Mode

This mode reduces power consumption even more than quick recovery mode, and allows Sleep mode to be set separately for each function.

To use the printer, press **[GO]**. The printer will be ready to operate within 24 seconds.

For more information on Energy Saver settings, refer to *Sleep Level Set. (Sleep level setting)* section of the *Advanced Operation Guide*.

Note If the Low Power Timer is equal to the Sleep Timer, a Sleep mode is preceded.

3 Maintenance

This chapter contains explanations on the following topics:

| | |
|--------------------------------------|------------|
| General Information | 3-2 |
| Toner Container Replacement | 3-2 |
| Replacing the Waste Toner Box | 3-6 |
| Cleaning the Printer | 3-8 |

General Information

This chapter describes basic maintenance tasks you can perform on the printer. You can replace the following component according to the printer's display:

- Toner Kits
- Waste Toner Box

Also, the following parts need periodic cleaning:

- Paper Transfer Unit



Note Information Collection on Memory Chips - The memory chip attached to the toner container is designed to improve convenience for the end user; to support the recycling operation of empty toner containers; and to gather information to support new product planning and development. The information gathered is anonymous - it cannot be associated to any specific individual and the data is intended to be used anonymously.

Toner Container Replacement

The toner container in the printer should be replaced as soon as the message display shows `Toner low` or soon after. If you continue to use the printer, eventually the toner supply will be exhausted at which point the printer will stop printing and the `Replace toner C, M, Y, K` message will be shown instructing you to install a new toner kit.

Frequency of Toner Container Replacement

The life of the toner containers depends on the amount of toner required to accomplish your printing jobs. According to ISO/IEC 19798 and EcoPrint switched off the toner container can print as follows (A4/Letter paper is assumed):

| Toner Color | Life of the Toner Container (Printable pages) |
|-------------|---|
| Black | 12,000 images |
| Cyan | 10,000 images |
| Magenta | 10,000 images |
| Yellow | 10,000 images |



Note The toner container packed with the new printer has to fill up the system when operating the first time. Therefore only 50% of the first toner kits can be used for printing. (For example: P-C3060DN can print 6,000 Black & White images using the black starter toner container).

Toner Kits

For best results, we recommend that you only use genuine Parts and Supplies.

The toner kits are supplied in 4 different colors: cyan, magenta, yellow and black.

A new toner kit for each color contains the following items:

- Toner Container
- Plastic waste bags for old toner container and old waste toner box

-
- Waste Toner Box
 - Installation Guide



Note Do not remove the toner container from the carton until you are ready to install it in the printer.

Understanding Messages Requesting Toner Container Replacement

The printer displays messages for individual colors at two stages of toner usage. This message is automatically alternated with the other printer message (such as *Ready*):

- When the printer becomes low on toner, for example in the cyan container, the printer displays the message *Toner low C* as the first caution. Note the replacement is not always necessary at this stage.
- If you ignore the above message and continue printing, the printer displays the message *Replace toner* — just before the toner is used up. The toner container must be replaced immediately. Clean the separate charger wires, etc. After the cleaning is finished, however, the message does not automatically change to *Ready*. To restart printing, you must press **[GO]** and make the printer ready.

In either case, replace the toner container, refer to *Toner Container Replacement* on page 3-2.

Replacing the Toner Container

This section explains how to replace the toner containers. When replacing the toner container of any color, always replace the waste toner box at the same time. If this box is full, the printer may be damaged or contaminated by the waste toner that may spill over the box.



CAUTION Do not attempt to incinerate parts which contain toner. Dangerous sparks may cause burns.

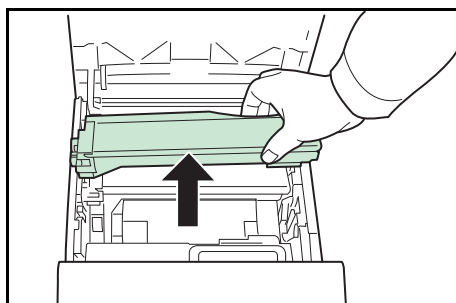
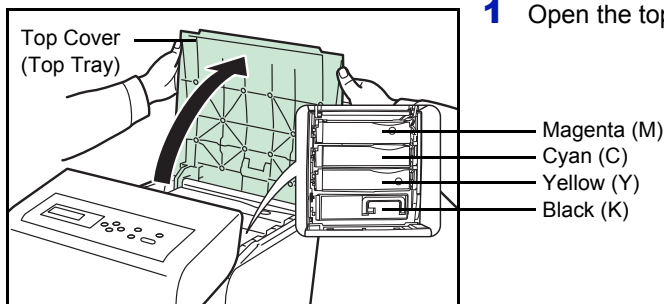
IMPORTANT During toner container replacement, temporarily move storage media and computer supplies (such as floppy disks) away from the toner container. This is to avoid damaging media by the magnetism of toner.

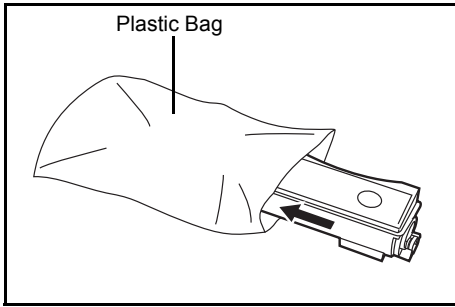
IMPORTANT We are not liable against any damages or problems arising from the use of toner containers other than those designated as original our toner containers. For optimum performance, it is also recommended to use only the our toner containers which are specifically intended for use in your country or region. If the toner container for another destination is installed, the printer will stop printing.



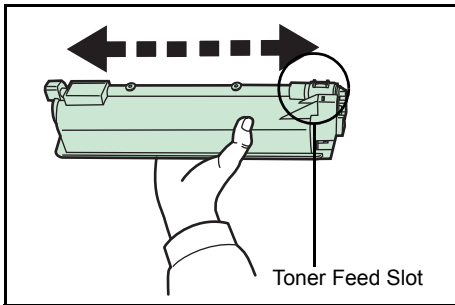
Note You do not have to turn printer power off before starting the replacement. Any data that may be processing in the printer will be deleted if you turn the printer power off.

To replace the toner container, first make sure of the color of the toner container requiring replacement. In this example, it is assumed that you are replacing the yellow toner container.

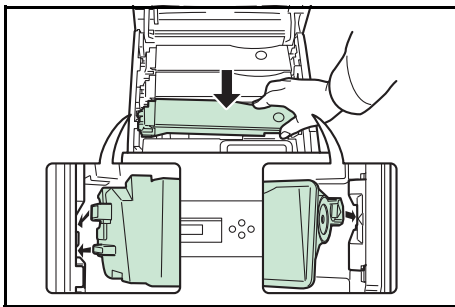




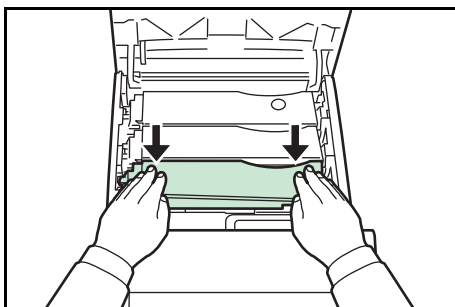
- Put the old toner container in the plastic bag (contained in the toner kit) and discard it later according to the local code or regulations for waste disposal.



- Take the new toner container out of the toner kit.
- Shake the new toner container 5 or 6 times as shown in the figure in order to distribute the toner evenly inside the container. Do not press too firmly on the center of the toner container or touch the toner feed slot.



- Set the new toner container in the printer as shown in the figure below.



- Push down on the top of the toner container to install it firmly in place. Use the same procedure to replace the other color toner containers.

- Close the top cover (top tray).



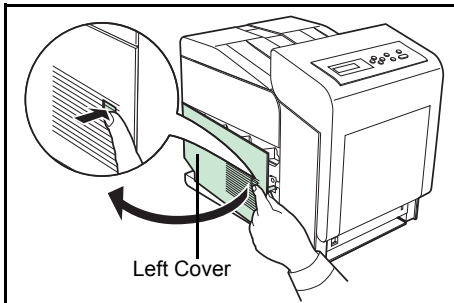
Note If the top cover (top tray) does not close, check that the new toner container is installed correctly (in step 7). After use, always dispose of the toner container and the waste toner box in accordance with Federal, State and Local rules and regulations.

Proceed to the next section.

Replacing the Waste Toner Box

Replace the waste toner box when the `Check waste toner box` message is displayed. A new waste toner box is included with the toner kit. The waste toner box needs to be replaced before the printer will operate.

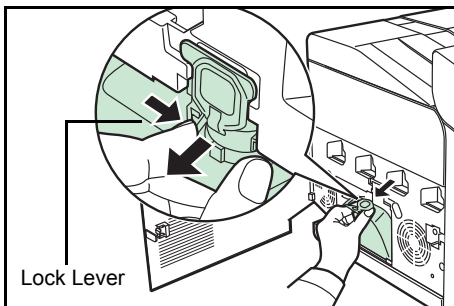
- 1 Open the left cover.



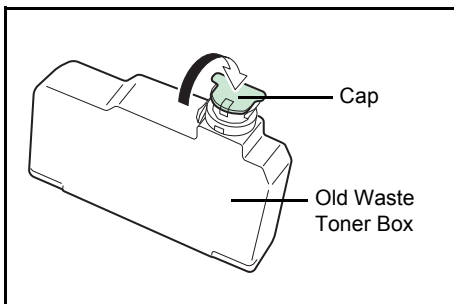
- 2 While holding the waste toner box, press the lock lever and then gently remove the waste toner box.



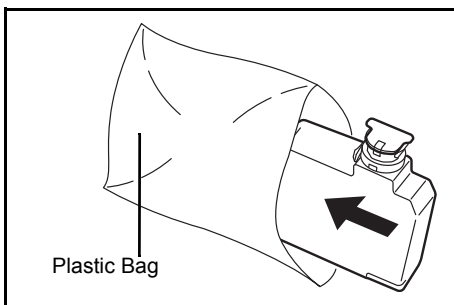
Note Remove the waste toner box as gently as possible so as not to scatter the toner inside. Do not let the opening of the waste toner box face downward.

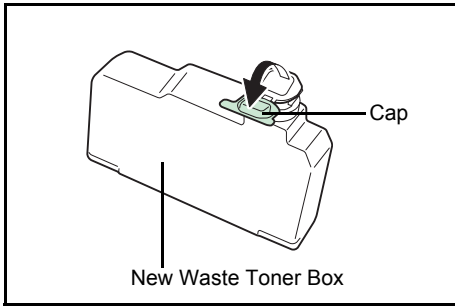


- 3 Close the cap to the old waste toner box after removing the box from the printer.

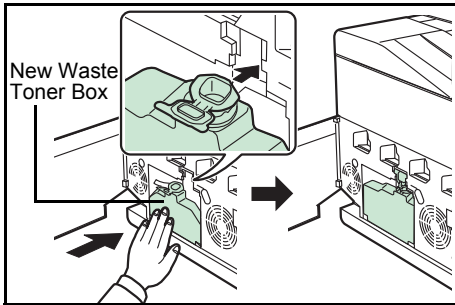


- 4 To prevent toner from spilling, put the old waste toner box in the plastic bag (contained in the toner kit) and discard it later according to the local code or regulations for waste disposal.





- 5** Open the cap of the new waste toner box.



- 6** Insert the new waste toner box as shown in the figure. When the box is set correctly, it will snap into place.

- 7** Make sure that the waste toner box is correctly inserted and close the left cover.

After replacing the toner containers and the waste toner box, clean the paper transfer unit. For instructions, refer to *Cleaning the Printer on page 3-8*.

Cleaning the Printer

The paper transfer unit should be cleaned each time the toner container and waste toner box are replaced.

To maintain optimum print quality, it is also recommended that the inside of the printer be cleaned once a month as well as when the toner container is replaced.

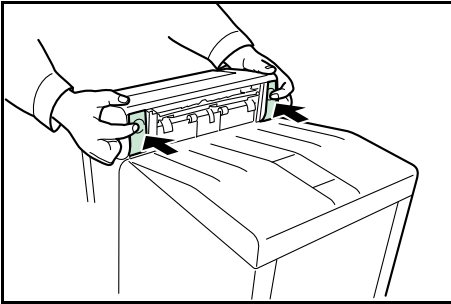
It should also be cleaned if streaking or lines appear on printed copies, or if printouts appear faint or blurred.

Cleaning the Paper Transfer Unit

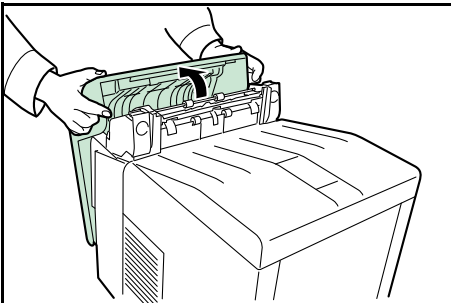
Print problems such as soiling of the reverse side of printed pages may occur if the paper transfer unit becomes dirty. To clean the paper transfer unit, you must use the dry cloth.

CAUTION Components inside the fuser cover are hot. Do not touch it with your hands as it may result in burn injury.

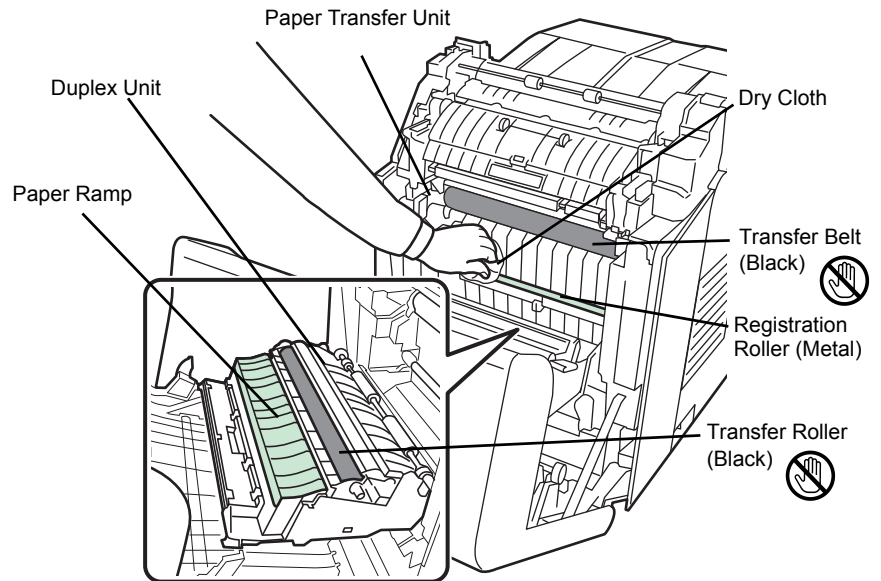
1 Press the lever to release the lock.




2 Pull out the front cover.




-
- 3** Wipe away the paper dust on the registration roller and the paper ramp using the dry cloth.



 **Note** Be careful not to touch the black transfer roller and black transfer belt during cleaning as this may adversely affect print quality.

- 4** Push the front cover back in completely.

 **Note** Take care not to get your hands caught in the front cover when you close it.

4 Troubleshooting

This chapter contains explanations on the following topics:

| | |
|-------------------------------|-------------|
| General Guidelines | 4-2 |
| Print Quality Problems | 4-3 |
| Error Messages | 4-6 |
| Clearing Paper Jams | 4-11 |

If a problem cannot be corrected, contact your service technician.

General Guidelines

The table below provides basic solutions for problems you may encounter with the printer. We suggest you consult this table to troubleshoot the problems before calling for service.

| Symptom | Check Items | Corrective Action |
|--|--|---|
| Print quality is not good. | Refer to <i>Print Quality Problems on page 4-3</i> . | |
| Paper is jammed. | Refer to <i>Clearing Paper Jams on page 4-11</i> . | |
| Nothing lights on the operation panel even when power is turned on and the fan makes no noise. | Check that the power cord is properly plugged into the power outlet. | Turn off the printer's power, plug in the power cord securely, and try turning on the printer's power again. |
| | Check that the power switch is in the On (I) position. | Set the power switch to the On position. |
| The printer prints a status page, but does not print jobs from the computer. | Check the printer cable or the interface cable. | Connect both ends of the printer cable securely. Try replacing the printer cable or the interface cable. |
| | Check program files and application software. | Try printing another file or using another print command. If the problem occurs only with a specific file or application, check the printer driver settings for that application. |
| The printer is emitting steam in the area around the top tray. | Check the room temperature to see if it is low, or if damp paper was used. | Depending on the printing environment and the paper's condition, the heat generated during printing will cause the moisture in the paper to evaporate, and the steam emitted may look like smoke. This is not a problem, and you can continue printing. If the steam concerns you, raise the room temperature, or replace the paper with a newer, dryer paper. |

Tips

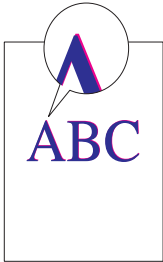
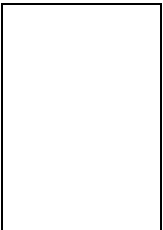
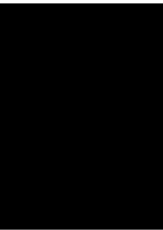
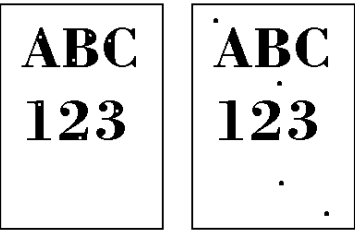
Printer problems may be solved easily by following the tips below. When you have encountered a problem that following the above guidelines will not solve, try the following:

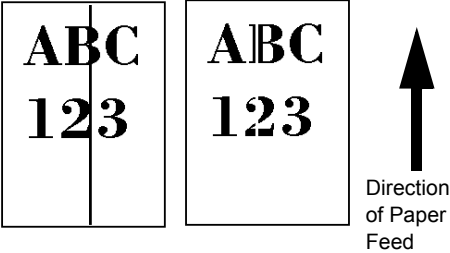
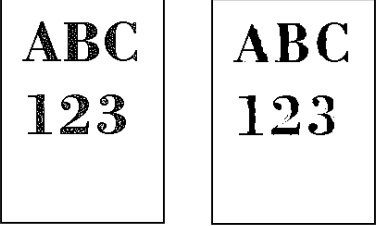
- Turn the printer power off and wait for several seconds. Then, turn on the printer.
- Reboot the computer which sends the print jobs to the printer.
- Make sure that the procedures for printing are correctly followed in the application software. Consult the documentation supplied with the application software.

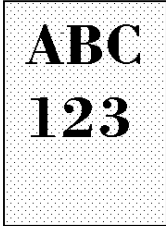
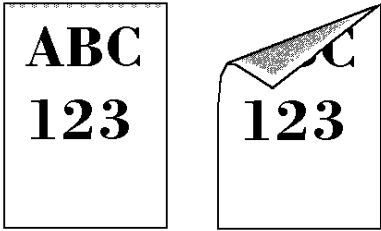
Print Quality Problems

The tables and diagrams in the following sections define print quality problems and the corrective action you can conduct to solve the problems. Some solutions may require cleaning or replacing parts of the printer.

If the suggested corrective action will not solve the problem, call for service.

| Printed Results | Corrective Action |
|--|--|
| <p>Skewed-color printout</p>  | <p>Conduct color registration using the printer operation panel. For details, refer to <i>Registration Normal (Color registration [standard])</i> section or <i>Registration Details (Color registration [detailed])</i> section of the <i>Advanced Operation Guide</i>.</p> |
| <p>Completely blank printout</p>  | <p>Check the toner containers. Open the printer top cover (top tray) and check that the toner containers are correctly installed in the printer. For more information on installing the toner containers, refer to <i>Toner Container Replacement on page 3-2</i>.</p> <hr/> <p>Check that the application software is correctly operated.</p> |
| <p>Full single-color printout</p>  | <p>Check the main charger unit. Open the left cover and check that the main charger unit is correctly installed.</p> |
| <p>Dropouts or stray dots</p>  | <p>Clean the main charger units. For details, refer to <i>LSU/Charger (LSU/Main charger cleaning mode setting)</i> section of the <i>Advanced Operation Guide</i>.</p> |

| Printed Results | Corrective Action |
|---|--|
| <p>Black or white vertical streaks</p>  | <p>Check the operation panel for toner. If the <code>Toner low C,M,Y,K</code> message is displayed with color description, install a new toner kit for the color. To replace the toner container, refer to <i>Toner Container Replacement on page 3-2</i>.</p> <hr/> <p>Clean the main charger units. For details, refer to <i>LSU/Charger (LSU/Main charger cleaning mode setting)</i> section of the <i>Advanced Operation Guide</i>.</p> <hr/> <p>Refresh drum. Perform the following procedures on the operation panel and try cleaning the drum surface using the printer's built-in cleaning system.</p> <ol style="list-style-type: none"> 1 Press [MENU]. 2 Press Δ or ∇ repeatedly until <code>Adjust/Maintenance ></code> appears. 3 Press \triangleright. Press Δ or ∇ repeatedly until <code>>Service ></code> appears. 4 Press \triangleright. Press Δ or ∇ repeatedly until <code>>>Drum</code> appears. 5 Press [OK] twice. 6 The message display shows <code>Please wait</code>. After approx. 3 minutes, the display returns to <code>Ready</code>. |
| <p>Faint or blurred printing</p>  | <p>Clean the main charger units. For details, refer to <i>LSU/Charger (LSU/Main charger cleaning mode setting)</i> section of the <i>Advanced Operation Guide</i>.</p> <hr/> <p>Make sure the paper type setting is correct the paper being used. For details, refer to <i>Paper Settings</i> section of the <i>Advanced Operation Guide</i>.</p> <hr/> <p>Conduct color calibration either by switching the printer off then on or using the printer operation panel. For details, refer to <i>Color Calibration</i> section of the <i>Advanced Operation Guide</i>.</p> <hr/> <p>Try adjusting the color control settings using the printer driver.</p> <hr/> <p>Check the operation panel. If the <code>Toner low C,M,Y,K</code> message is displayed with color description, install a new toner kit for the color. To replace toner, refer to <i>Toner Container Replacement on page 3-2</i>.</p> <hr/> <p>Refresh drum. Perform the following procedures on the operation panel and try cleaning the drum surface using the printer's built-in cleaning system.</p> <ol style="list-style-type: none"> 1 Press [MENU]. 2 Press Δ or ∇ repeatedly until <code>Adjust/Maintenance ></code> appears. 3 Press \triangleright. Press Δ or ∇ repeatedly until <code>>Service ></code> appears. 4 Press \triangleright. Press Δ or ∇ repeatedly until <code>>>Drum</code> appears. 5 Press [OK] twice. 6 The message display shows <code>Please wait</code>. After approx. 3 minutes, the display returns to <code>Ready</code>. |

| Printed Results | Corrective Action |
|---|---|
| <p>Grey background</p>  | <p>Clean the main charger units. For details, refer to <i>LSU/Charger (LSU/Main charger cleaning mode setting)</i> section of the <i>Advanced Operation Guide</i>.</p> <hr/> <p>Conduct color calibration either by switching the printer off then on or using the printer operation panel. For details, refer to <i>Adjust/Maintenance (Adjust/Maintenance selection/setting)</i> section of the <i>Advanced Operation Guide</i>.</p> |
| <p>Dirt on the top edge or back of the paper</p>  | <p>Check the paper chute and the ramp. Pull out the paper transfer unit and check for toner on the paper ramp. Clean the paper ramp using a soft, dry, lint-free cloth. For details, refer to <i>Cleaning the Paper Transfer Unit on page 3-8</i>.</p> <hr/> <p>Clean the main charger units. For details, refer to <i>LSU/Charger (LSU/Main charger cleaning mode setting)</i> section of the <i>Advanced Operation Guide</i>.</p> |

Error Messages

The following table lists errors and maintenance messages that you can be dealt with by yourself. If `Call service` appears, turn off the printer, disconnect the power cord, and contact your service technician.

If `Call service` or `Error.Power off.` is displayed, turn off the printer then turn it back on to see if the printer has recovered. If the printer has not recovered, turn off the printer, disconnect the power cord, and contact your service representative or authorized service center.

Some errors cause the alarm to sound. To stop the alarm, press **[Cancel]**.

| Message | Corrective Action |
|------------------------------------|---|
| Account error ## Press GO | This message is displayed when the Job Accounting function is enabled and an attempt to specify job accounting settings or to register or delete an account fails. To return the printer to the print-ready status, press [GO] . |
| Add paper MPTray | The paper has run out in the paper source displayed. Supply paper according to the paper source displayed (paper cassettes, MP tray, or optional paper feeders). This message is displayed alternately with messages indicating the printer status, such as, Ready, Please wait, and Processing. |
| Call service F###: | F### represents a controller error (#=0, 1, 2, ...). Call for service. The printer does not operate when this message is displayed. |
| Call service ####:0123456 | #### represents a mechanical error (#=0, 1, 2, ...). Call for service. The printer does not operate when this message is displayed. The total number of pages printed is also indicated, e.g. 0123456. |
| Canceling data | Displayed when data is being canceled. |
| Cassette # not loaded | The corresponding paper cassette is not installed. Install the cassette. The cassette number can be 1 (topmost) to 4 (bottom). |
| Change envelope switch position | Displayed when the paper type does not match the envelope switch setting. |
| Check cassette # | This message is displayed when a paper lift error has occurred in the paper source's cassette. Pull out the cassette for the paper source displayed (either the paper cassettes or optional paper feeders) and check if the paper is loaded correctly. The message <code>Call service</code> is displayed when this error occurs repeatedly. |
| Check waste toner box | This message warns following two cases. Install the new waste toner box. The waste toner box is not installed. The waste toner box is full. |
| Close front cover | The front cover of the printer is open. Close the front cover. |
| Close left cover | The left cover of the printer is open. Close the left cover. |
| Close top cover | The top cover of the printer is open. Close the printer top cover. |

| Message | Corrective Action |
|---------------------------------|---|
| Device busy | This message is displayed when <code>Remove Device</code> was selected while a USB memory was being used. The previous screen is displayed again 1 or 2 seconds. |
| Duplex disabled Press GO | You attempted to print with a paper size and paper type that cannot be used for duplex printing. Press [GO] to print onto one-side of the paper only. |
| Enter Account | An account code must be entered. This message is displayed if you try to print from the operation panel (e.g. printing a status page or using the Job Retention function) when the Job Accounting function is enabled. For more information, refer to <i>Job Accounting (Job Accounting selection/setting)</i> section of the <i>Advanced Operation Guide</i> . |
| Envelope mode | Displayed when the envelope switch is set to envelope mode. |
| Error.Power off. F### | Turn the power switch off and then back on again. If this message still remains, turn the power switch off, and contact your service representative or authorized service center. |
| Error.Power off. F000 | The printer controller and operation panel cannot exchange data. Turn the printer off and unplug it from the mains power supply. Then contact your service representative or authorized service center. See the back page of this manual for the relevant phone numbers. |
| Exceeded Max.output Press GO | This message is displayed when the Job Accounting function is enabled and an attempt has been made to exceed the print limit set for each account. To return the printer to the print-ready status, press [GO] . For more information, refer to <i>Job Accounting (Job Accounting selection/setting)</i> section of the <i>Advanced Operation Guide</i> . |
| Format SSD. | The SSD installed in the printer is not formatted, and therefore cannot be read or written. |
| ID error | The user ID entered for a private job, or a stored job is not correct. Check the user ID that you specified on the printer driver. For more information, refer to <i>Job Box</i> section of the <i>Advanced Operation Guide</i> . |
| Illegal Account Press GO | This message is displayed when the Job Accounting function is enabled and no account is set for a transmitted print job or the specified account is not registered (the incorrect account is set). To return the printer to the print-ready status, press [GO] . For more information, refer to <i>Job Accounting (Job Accounting selection/setting)</i> section of the <i>Advanced Operation Guide</i> . |
| Job not stored Press GO | Printing using the Job Box function failed because there was insufficient space available on the hard disk or RAM disk, or because the RAM disk was disabled when demounting the hard disk. To print an error report and return the printer to the print-ready status, press [GO] . |
| Job restricted Press GO | This message is displayed when printing was attempted, despite the Job Account function being on with Restriction applied as the job limit for each job account. To return the printer to the print-ready status, press [GO] . For more information, refer to <i>Job Accounting (Job Accounting selection/setting)</i> section of the <i>Advanced Operation Guide</i> . |

| Message | Corrective Action |
|-----------------------------------|---|
| KPDL error ## Press GO | Current print processing cannot continue because of occurrence of KPDL error which is categorized by ##. To print out an error report, display >>Error Report from the menu system, and select On. Press [GO] to resume printing. You can abandon printing by pressing [Cancel] . If Auto Error Clear is set to On, printing will be automatically resumed after a preset period of time. |
| Load Cassette # (A4) / (PLAIN) | The paper cassette matching the paper size and paper type of the print job is empty. Load paper into the paper cassette as displayed in place of #. Press [GO] to resume printing. If you want to print from a different paper source, press Δ or ∇ to display Use alternative? and you can change the source for paper feeding. After selecting a paper source and pressing [MENU] , Paper Settings > appears. By pressing the Δ , the paper type settings menu appears. After setting the correct paper type, press [OK] and printing starts. |
| Load MP Tray (A4) / (PLAIN) | There is no paper cassette installed in the printer that matches the paper size and paper type of the print job. Set paper in the MP tray. Press [GO] to resume printing. (Note that feeding the paper having a paper size which does not match the current paper size from the MP tray can cause paper jam.) If you want to print from a different paper source, press Δ or ∇ to display Use alternative? and you can change the source for paper feeding. After selecting a paper source and pressing [MENU] , Paper Settings > appears. By pressing the Δ , the paper type settings menu appears. After setting the correct paper type, press [OK] and printing starts. |
| Low security | This message is displayed when Low was selected in Security Level. |
| Memory overflow Press GO | The total amount of data received by the printer exceeds the printer's internal memory. Try adding more memory. Press [GO] to resume printing. You can abandon printing by pressing [Cancel] . If Auto Error Clear is set to On, printing will be automatically resumed after a preset period of time. |
| No multi copies Press GO | Multi copies cannot be printed because RAM disk is disabled or the SSD is not installed. Try adding more memory or installing SSD, and configuring the RAM disk settings. |
| No power supply Cassette | This message is displayed when the optional paper feeder PF-510 is not connected to a power source and COATED (coated paper) is selected as the paper type setting. Connect it to a power source via the printer. |
| Not completed. Press GO. | The restarting of the option network failed. Please restart it again. |
| Paper jam ##### | A paper jam has occurred. The location of the paper jam is indicated in place of the #'s. For details, refer to <i>Clearing Paper Jams on page 4-11</i> . |
| Paper loading | The selected cassette is being prepared. |
| Paper path error | There is no paper cassette in the feeder, or the cassette is not inserted properly. After reinserting the paper cassette, you should be able to print. When two or more optional feeders are installed and the lowest one is selected, the same message will appear if any of the upper paper feeder and the printer cassette is improperly installed. |

| Message | Corrective Action |
|---|---|
| RAM disk error## Press GO | A RAM disk error has occurred. Look at the error code given in place of ## and refer to <i>Storage Error Codes on page 4-10</i> . To ignore the RAM disk error, press [GO] . |
| Replace MK | Replace Maintenance Kit which is displayed on the message display. Replacement of the maintenance kit is necessary at every 200,000 images of printing and requires professional servicing. Contact your service technician. |
| Replace toner C,M,Y,K ↓ ↑ Replace toner Clean printer | Two message items are displayed alternately. Toner has run out in the toner container(s). Replace the toner container using a new toner kit for the particular color. The printer does not operate when this message is displayed. For example, if Replace toner C,K is displayed, replace the cyan and the black toner containers. |
| SSD error ## Press GO | A SSD error has occurred. Look at the error code given in place of ## and refer to <i>Storage Error Codes on page 4-10</i> . To ignore the SSD error, press [GO] . |
| Toner low C,M,Y,K | Replace the toner container using a new toner kit. Color of the toner container that needs to be replaced is represented by C (Cyan), M (Magenta), Y (Yellow), and K (Black). |
| Top tray paper full | The top tray has become full (approx. 250 pages). You must remove all printed pages from the top tray. When the printer detects that the top tray is empty again, the printer will continue printing into the top tray. |
| Unknown toner installed | We will not be liable for any damage caused by the use of third party supplies in this machine. |
| Unknown toner PC C,M,Y,K | This message is displayed if the installed toner container's regional specification does not match the printer's. Install the specified toner container. |
| USB memory error ## Press GO | An error has occurred in the USB memory device. To return the printer to the print-ready status, press [GO] . |
| Use alternative? Cassette 1 | When the cassette does not contain any paper that matches the print data (paper size and type), this message allows you to specify an alternative cassette to use instead. A paper source number is only displayed when an optional paper feeder is installed. To print from a different paper source, refer to <i>Paper Feed Mode (Setting the paper feed source)</i> section of the <i>Advanced Operation Guide</i> . |
| Wrong Account | Displayed when an attempt is made to register an account in the Job Accounting menu by entering an account code that already exists. For more information, refer to <i>Job Accounting (Job Accounting selection/setting)</i> section of the <i>Advanced Operation Guide</i> . |
| Wrong ID | The ID or Password entered for the Job Accounting function is not correct. Check the ID or Password. For more information, refer to <i>Job Accounting (Job Accounting selection/setting)</i> section of the <i>Advanced Operation Guide</i> . |
| Wrong Password | The password does not match the password set. Enter the correct password. For more information, refer to <i>Job Accounting (Job Accounting selection/setting)</i> section of the <i>Advanced Operation Guide</i> . |

Storage Error Codes

SSD Errors

| Code | Meaning |
|------|---|
| 03 | The SSD is write protected using command operation. Remove the write protection using the command. |
| 04 | There is no available SSD space. Delete unnecessary files, etc., in order to free up space. |
| 05 | The desired file does not exist in the SSD. Stored the file in the SSD. |
| 10 | The file stored in the SSD is write protected using command operation. Remove the write protection using the command. |

USB Memory Errors

| Code | Meaning |
|------|--|
| 01 | The amount of data that can be saved at once has been exceeded. Split the large file into multiple smaller files. The USB memory is write protected. Remove the write protection. The USB memory is broken. Even if the problem is not solved, format the USB memory with the device or use the new USB memory compatible with the printer. |
| 04 | There is no available space. Delete unnecessary files, etc., in order to free up space. |

RAM Disk Errors

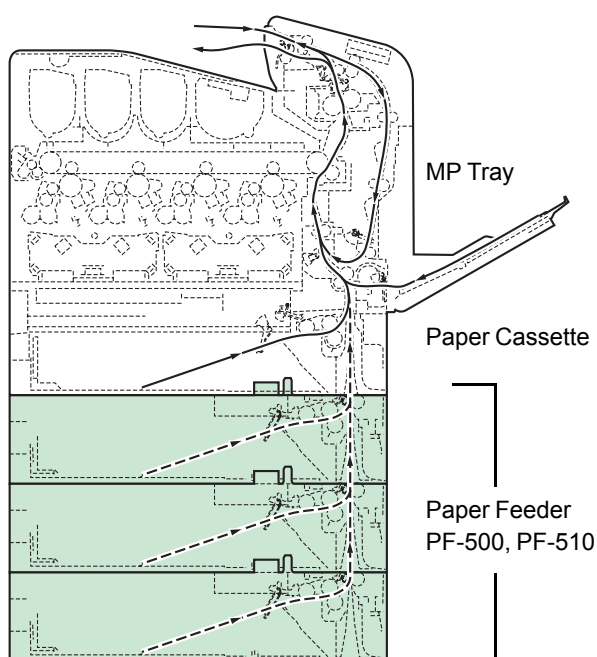
| Code | Meaning |
|------|--|
| 02 | RAM disk mode is <code>Off</code> . Turn RAM disk mode <code>On</code> from the operation panel. |
| 03 | The RAM disk is write protected using command operation. Remove the write protection using the command. |
| 04 | No disk space. Purge unnecessary files or increase the RAM disk size. |
| 05 | The desired file does not exist in the RAM disk. Stored the file in the RAM disk. |
| 10 | The file stored in the RAM disk is write protected using command operation. Remove the write protection using the command. |

Clearing Paper Jams

If the paper jammed in the paper transport system, or no paper sheets were fed at all, the **Paper jam** message appears and the location of the paper jam (the component where the paper jam has occurred) is also indicated. The printer automatically goes off-line when this message is displayed. Remove jammed paper. After removing jammed paper, the printer will re-start printing.

Possible Paper Jam Locations

The figure below explains the printer's paper paths including the options. The locations where paper jams might occur are also shown here, with each location explained in the table below. Paper jams can occur in more than one component on the paper paths.



| Paper Jam Message | Description | Reference Page |
|--------------------------------|--|-------------------------------------|
| Paper jam Printer | Paper is jammed inside the printer, paper cassette or MP tray. | page 4-12 page 4-13 page 4-14 |
| Paper jam Cassette 2 (to 4) | Paper is jammed at the optional paper feeder's cassette. | page 4-14 |

General Considerations for Clearing Jams

Bear in mind the following considerations when attempting jam removal:



CAUTION When pulling the paper, pull it gently so as not to tear it. Torn pieces of paper are difficult to remove and may be easily overlooked, deterring the jam recovery.

- If paper jams occur frequently, try using a different type of paper, replace the paper with paper from another ream, flip the paper stack over, or rotate the paper stack 180 degrees. The printer may have problems if paper jams recur after the paper was replaced.
- Whether or not the jammed pages are reproduced normally after printing is resumed depends on the location of the paper jam.

Utilizing Online Help Messages

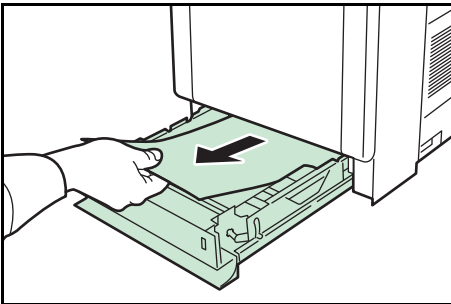
Online help messages are available in the printer's message display to provide simple instructions for clearing jams. Press (?) when the paper jam message has appeared. Then a help message will appear to facilitate jam clearing in the location.

Paper jam at Cassette

Paper is jammed at paper cassette.

- 1** First, open the printer's front cover and check for paper jams in the paper transfer unit.

For more information, refer to *Paper Jam in Printer on page 4-13*.



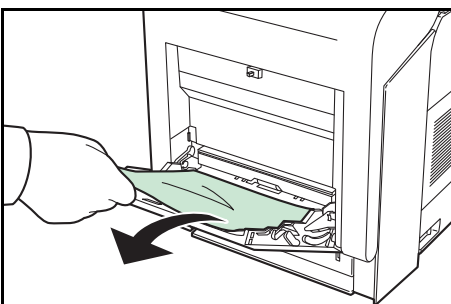
- 2** Pull out the paper cassette and remove the jammed paper.

Paper Jam at MP Tray

Paper is jammed at the MP tray. Remove the jammed paper using the procedure given below.

- 1** First, open the printer's front cover and check for paper jams in the paper transfer unit.

For more information, refer to *Paper Jam in Printer on page 4-13*.



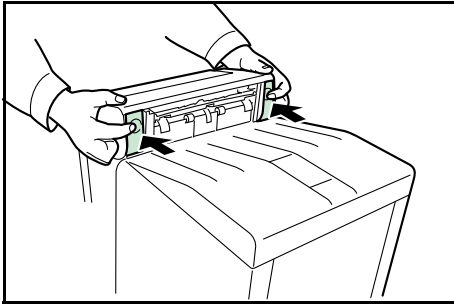
- 2** Remove the jammed paper.

Paper Jam in Printer

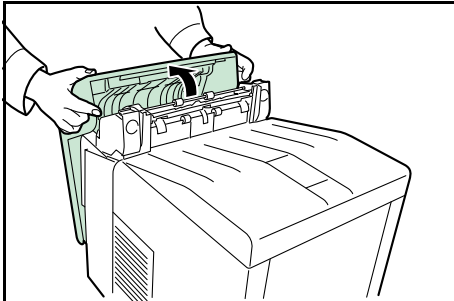
Paper is jammed at the paper cassette or inside the printer. Remove the jammed paper using the procedure given below.

CAUTION Components inside the fuser cover are hot. Do not touch it with your hands as it may result in burn injury.

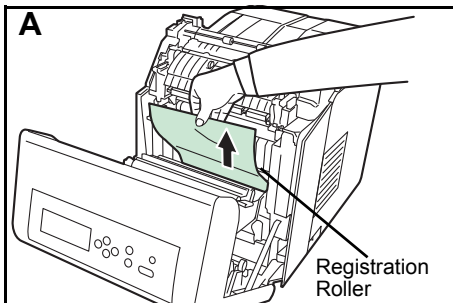
1 Press the lever to release the lock.



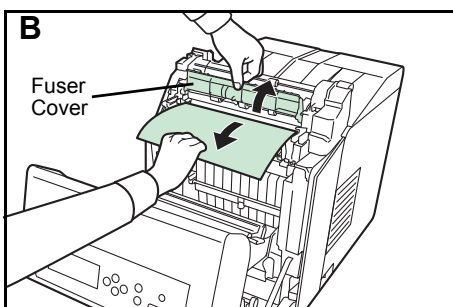
2 Pull the front cover towards you.

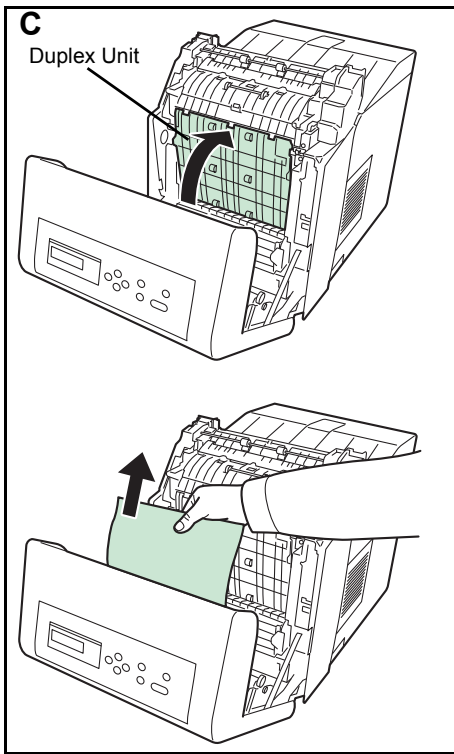


3 If the paper has jammed near the registration roller, as shown in **A**, remove the paper by pulling it up from the center.

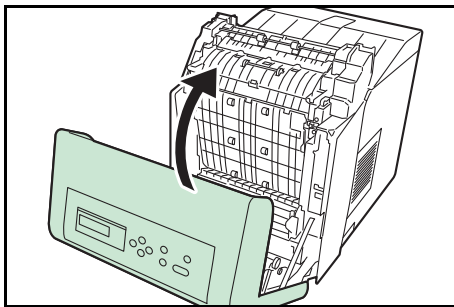


If the paper has jammed inside the fuser unit, as shown in **B**, open the fuser cover and remove the paper by pulling its edge.





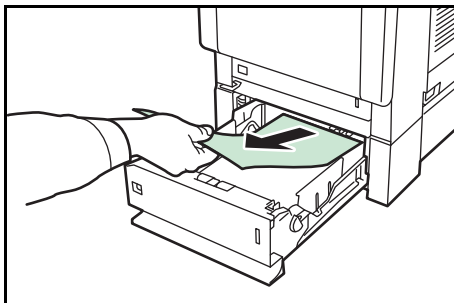
If the paper has jammed inside the duplex unit, as shown in **C**, lift the duplex unit and remove the paper by holding it in the middle.



4 Close the front cover.

Paper Jam at Cassette 2 (to 4)

Paper is jammed at the paper cassette. Remove the jammed paper using the procedure given below.



Pull out the paper feeder and remove the jammed paper.

5 Specifications



Note Specifications are subject to change without notice.

| Item | | Description |
|----------------------------------|---|---|
| Printing Method | | Electrophotographic four color (CMYK) printing using tandem (4) drum system |
| Printing Speeds | Cassette | A4: 30 ppm, B5, A5, A6: 27 ppm [†] , Letter: 32 ppm, Legal: 26 ppm |
| | MP Tray | A4: 27 ppm, B5, A5, A6: 27 ppm [†] , Letter: 28 ppm, Legal: 23 ppm |
| Duplex Printing Speed | | A4: 30 ppm, B5, A5: 27 ppm [†] , Letter: 32 ppm, Legal: 14 ppm |
| Resolution | | 600 dpi |
| First Print Out Time | | B/W : 8.5 seconds or less / Color : 10 seconds or less |
| Warm-up Time (22°C, 60%RH) | Power On | 36 seconds or less |
| | Sleep | 24 seconds or less |
| Memory | Standard | 512 MB |
| | Maximum | 1,536 MB |
| Operating Systems | | Microsoft Windows 2000/XP/Vista/7/8, Windows Server 2003/2008/2012 Apple Macintosh OS 10.5 or later |
| Interface | USB | USB Interface: 1 USB Memory Slot: 1 |
| | Network | Network Interface: 1 (10 BASE-T/100 BASE-TX/1000BASE-T) |
| | Option | eKUIO slot: 1 (SSD (HD-6/HD-7), Network Interface Kit (IB-50), Wireless Network Interface Kit (IB-51)) |
| Monthly Duty | Average | 3,000 pages (plain, A4 paper) |
| | Maximum | 100,000 pages (plain, A4 paper) |
| Paper Sizes | Cassette | Envelope C5, Executive, Letter, Legal, A4, B5, A5, A6, ISO B5, Custom, Oficio II, 216 × 340 mm, 16K, Statement, Folio |
| | Cassette (Optional Paper Feeder PF-500/ PF-510) | Envelope Monarch, Envelope #10, Envelope DL, Envelope C5, Executive, Letter, Legal, A4, B5, A5, Envelope #9, Envelope #6, ISO B5, Custom, Oufuku Hagaki, Oficio II, 216 × 340 mm, 16K, Statement, Folio, Youkei 2, Youkei 4 |
| | MP Tray | Envelope Monarch, Envelope #10, Envelope DL, Envelope C5, Executive, Letter, Legal, A4, B5, A5, A6, B6, Envelope #9, Envelope #6, ISO B5, Custom, Hagaki, Oufuku Hagaki, Oficio II, 216 × 340 mm, 16K, Statement, Folio, Youkei 2, Youkei 4 |

[†]. After 16 pages the printing speed becomes 14 ppm.

| Item | | Description |
|----------------------------|---|---|
| Paper Types† | Cassette (Optional Paper Feeder PF-500) | Plain, preprinted, bond, recycled, rough, letterhead, color, prepunched, high quality, and custom |
| | Cassette (Optional Paper Feeder PF-510) | Plain, preprinted, labels, bond, recycled, rough, letterhead, color, prepunched, envelope, cardstock, coated, thick, high quality, and custom |
| | MP Tray | Plain, transparency, preprinted, labels, bond, recycled, vellum, rough, letterhead, color, prepunched, envelope, cardstock, coated, thick, high quality, and custom |
| Paper Feed Source Capacity | Cassette | 500 sheets (80 g/m ²) |
| | MP Tray | 150 sheets (80 g/m ²) |
| Margin | | 4 mm (left, right, top and bottom) |
| Output Tray Capacity | Top Tray | 250 sheets (80 g/m ²) |
| Operation Environment | Temperature | 10 to 32.5 °C (50 to 90.5 °F) |
| | Relative Humidity | 15 to 80 % |
| | Altitude | 2,500 m (8,202 feet) maximum |
| | Illumination | 1,500 lux maximum |
| Power Source | | 120 V, 60 Hz, max. 9.2 A (U.S.A./Canada) 220-240 V, 50 Hz/60 Hz, max. 4.7 A (European countries) Max. allowable voltage fluctuation: ±10 % Max. allowable frequency fluctuation: ±2 % |
| Power Consumption | Maximum | 120 V models: 1,103 W or less 220-240V models: 1,103 W or less |
| | During Printing | 120 V models: 554 W 220-240 V models: 529 W |
| | During Standby | 120 V models: 79 W 220-240 V models: 76 W |
| | During Sleep Mode | 120 V models: 4 W 220-240 V models: 4 W |
| | Power Off | 0 W |
| Operating Noise†† | During Printing | LpA = 55 dB (A) |
| | During Standby | LpA = 36 dB (A) |
| | During Sleep Mode | immeasurably low |
| Dimensions (W x D x H) | | 345 × 518 × 480 mm 13-5/8 × 20-2/5 × 18-9/10" |
| Weight | | Approx. 29.5 kg (65 lbs) |

†. When using CUSTOM 1 (to 8), use the MP tray for paper sizes smaller than 105 × 148 mm (4 1/8 × 5 13/16 inches). The MP tray can be used with paper sizes over 70 × 138 mm (2 3/4 × 5 7/16 inches).

††. Sound pressure level at bystander position [front] in accordance with EN ISO 7779.

**We recommend the use of our own brand supplies.
We will not be liable for any damage caused by the use of third party supplies in this machine.**



